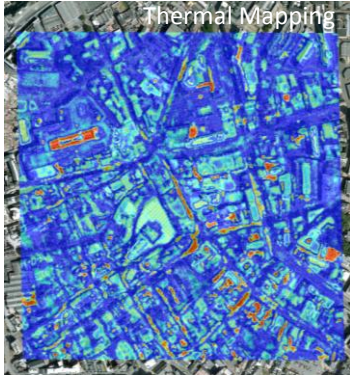




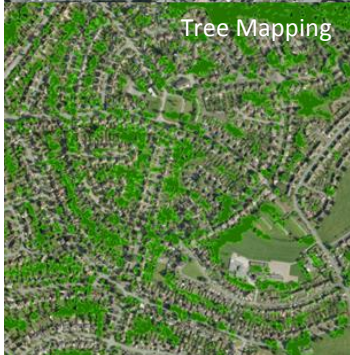
Global to Local: Space Innovations in Mapping



Thermal Mapping

Are you a decision-maker or do you provide information to decision-makers?

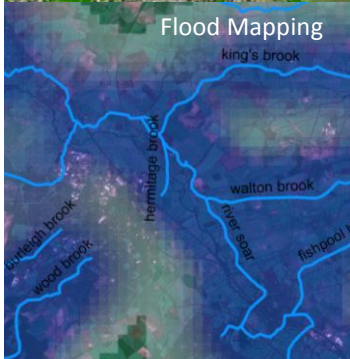
Earth Observation, in particular the European earth monitoring programme (GMES), provides information from satellites, aircraft and ground-based sensors to enhance situational awareness.



Tree Mapping

Global Navigation Satellite Systems (GNSS) provide accurate location and timing information.

Geographic Information Systems (GIS) can map information to provide a user friendly management tool.



Flood Mapping

Join us for a FREE event to discover innovative applications of data and mapping techniques

**Tuesday 1st November 2011
9.00 am—4.00 pm
National Space Centre, Leicester**

**Register online at
<http://spacedata.eventbrite.com>**





About the Event

This event will be an ideas exchange forum, which will give delegates the opportunity to consider and present their requirements in order to enhance current practices in business and the public sector.

What's Covered

- Specialist guest speakers on topics including:
 - Earth Observation and GMES (Global Monitoring for Environment and Security). Current and future data availability.
 - GNSS (Global Navigation Satellite Systems)
 - GIS (Geographical Information Systems)
 - Government policy and strategy.
 - Interactive workshops to cover practical applications of the current technologies presented in the earlier sessions.
 - Advice workshop facilitated by relevant funding organisations.
- FREE** business exhibition - space limited so book early - and ample networking opportunities.

Tuesday 1st November 2011

9.00 am—4.00 pm

National Space Centre, Leicester

Register online at:

<http://spacedata.eventbrite.com>

G-STEP, Readson House, 96-98 Regent Road, Leicester, LE1 7DF

Email: g-step@le.ac.uk Phone: 0116 229 7832 Web: www.g-step.co.uk

