



## John Foster

John Foster can be used independently for events for 2 – 110 delegates or combined with neighbouring venues for larger events. The venue comprises of six multi-functional meeting rooms all with integrated PC, projector and screen, lounge and bar ideal for networking and a dining room seating up to 200 guests.

### Meeting

- Six meeting rooms
- Seating from 2 – 110 delegates
- Free Wi-Fi
- Flexible seating
- Data projector, screen and PC in all meeting rooms
- Lifts to all meeting rooms if not ground floor
- Free car parking

### Hospitality

- Large hospitality area ideal for catering and small exhibitions
- Award winning catering
- Licensed bar with alfresco balcony

### Accommodation

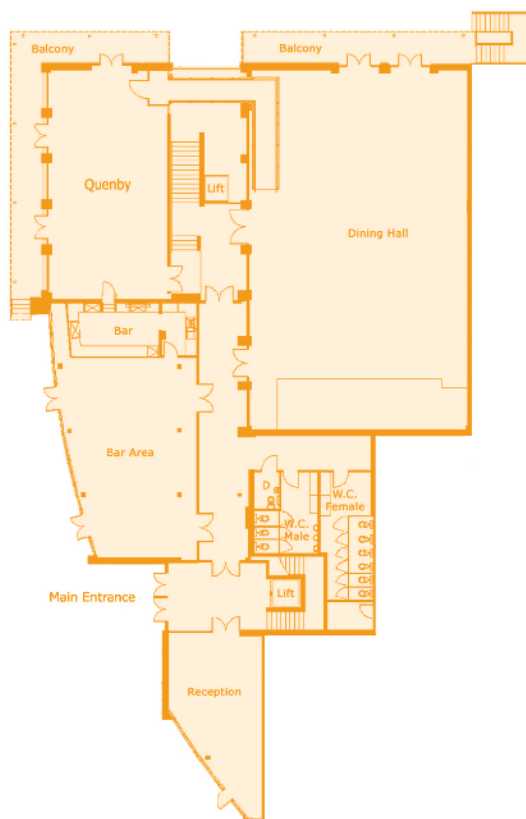
- 4 Star Campus accredited en suite accommodation
- 29 adapted bedrooms
- Free Wi-Fi
- Self-catering kitchens
- Lifts to bedrooms and ground floor rooms
- All within walking distance of meeting rooms
- On site gym, swimming pool and sports facilities
- On site laundry



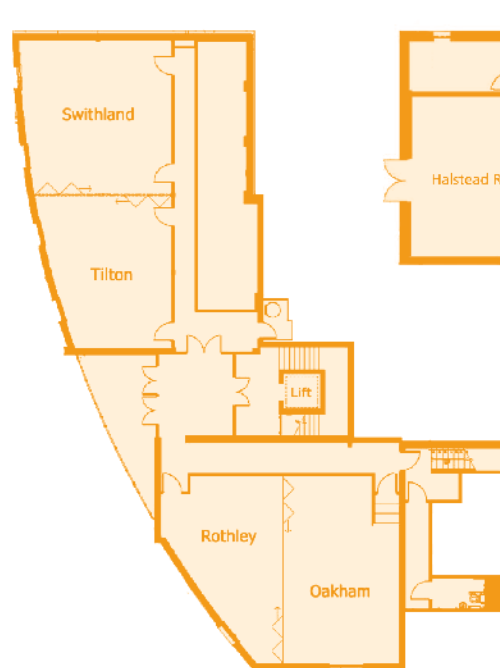
# John Foster – Room Capacities

Conference, Meeting and Event Facilities	Theatre	Cabaret	Boardroom	Seminar	Classroom	Approx. Room Dimensions L(m)	Approx. Room Dimensions W(m)
Dining Room	300	160	–	–	100	13	21
Swithland Room	60	18	16	20	18	7.5	7.7
Tilton Room	34	18	8	30	12	5	7.5
Swithland & Tilton Room Combined	110	48	34	70	28	7.5	15
Rothley Room	20	–	12	10	12	5.5	9.4
Oakham Room	35	6	20	20	12	6.2	9.4
Rothley & Oakham Room Combined	75	36	24	50	24	11.7	9.4
Quenby Room	60	36	25	35	18	7	13.5
Halstead Room	45	24	16	35	18	6.7	7.7
Hospitality Lounge	–	–	–	–	–	19.5	9.6 / 6

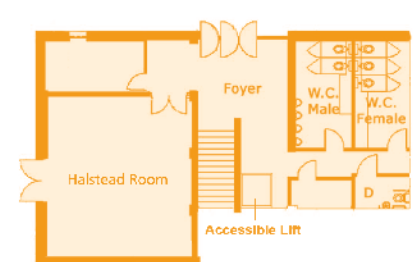
## Ground Floor Plan



## 1st Floor Plan



## Lower Ground Floor Plan



John Foster is just one of the many venues at Leicester Conferences. Our extensive portfolio of venues enables organisers to choose from our City Hub Suites or Oadby Conference Centre. Venues range from purpose built lecture theatre for 500 to smaller meeting rooms with charm and character.

Contact our team for more information on 0116 223 1680 or email [conferences@le.ac.uk](mailto:conferences@le.ac.uk)