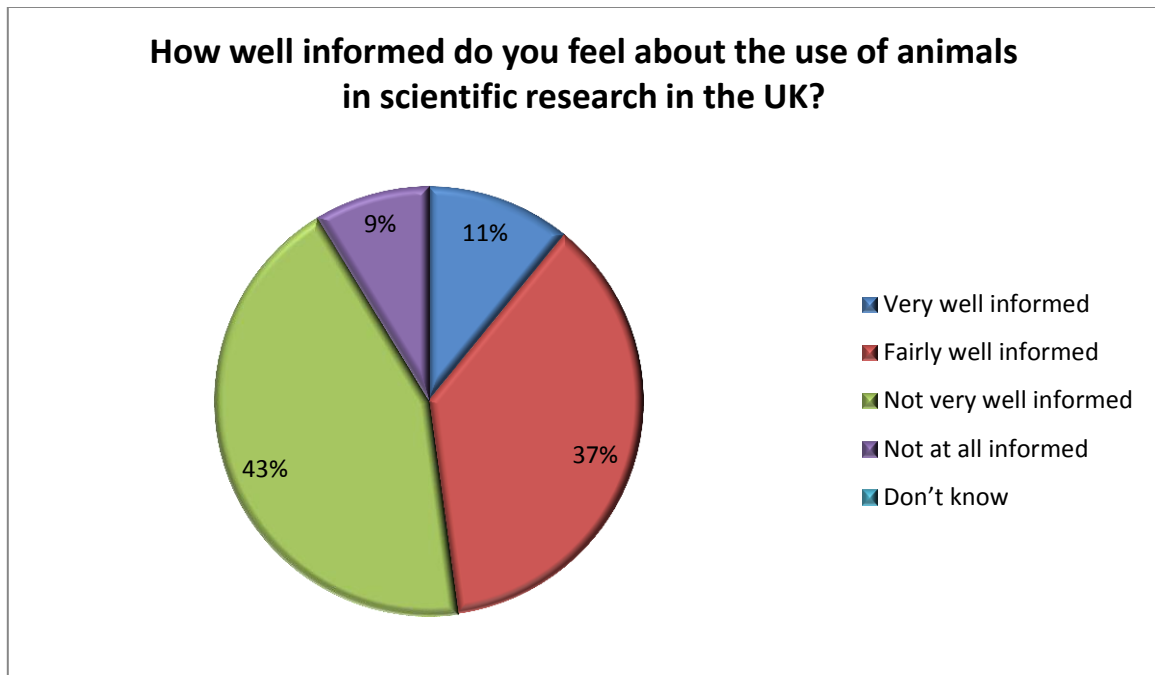


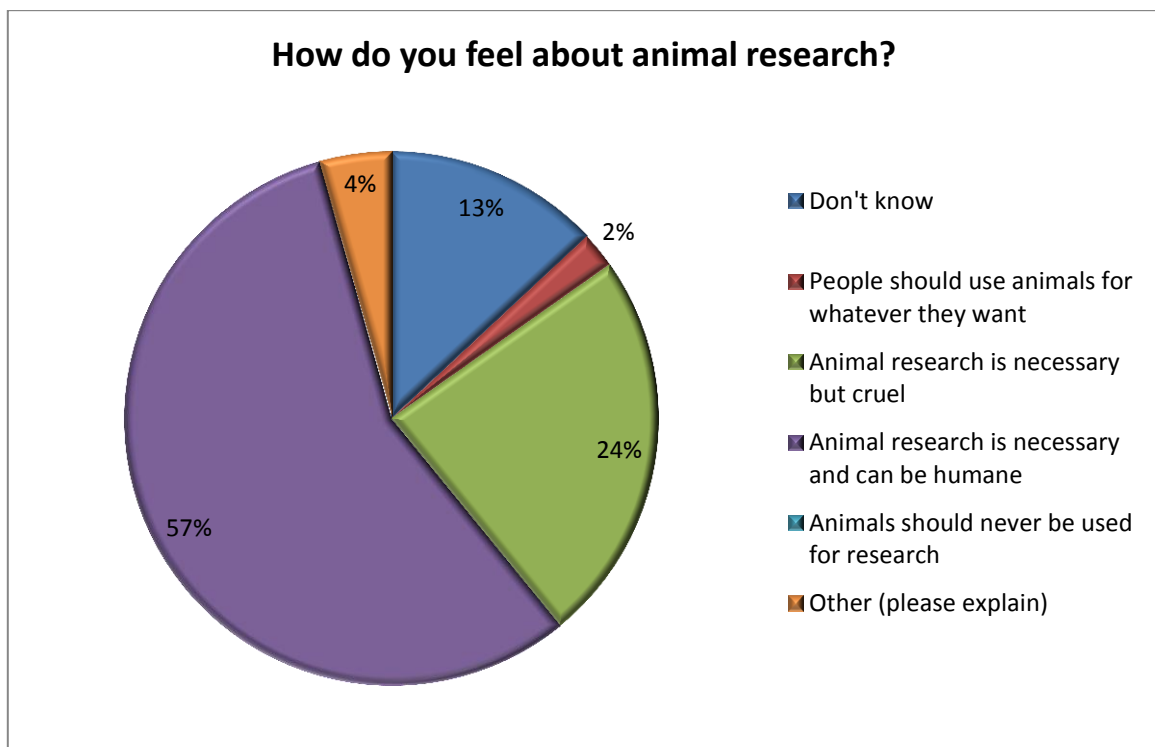
## School Science Week Pre-Visit Questionnaire

Leicester College, New College, Wyggeston and QE College and Sir Jonathan North Community College visited the Division of Biomedical Services between 23<sup>rd</sup>-27<sup>th</sup> March. The results also include the visit from Regent College on 9<sup>th</sup> March and 17<sup>th</sup> April. *Data compiled from 46 completed pre-visit questionnaires.*

1.

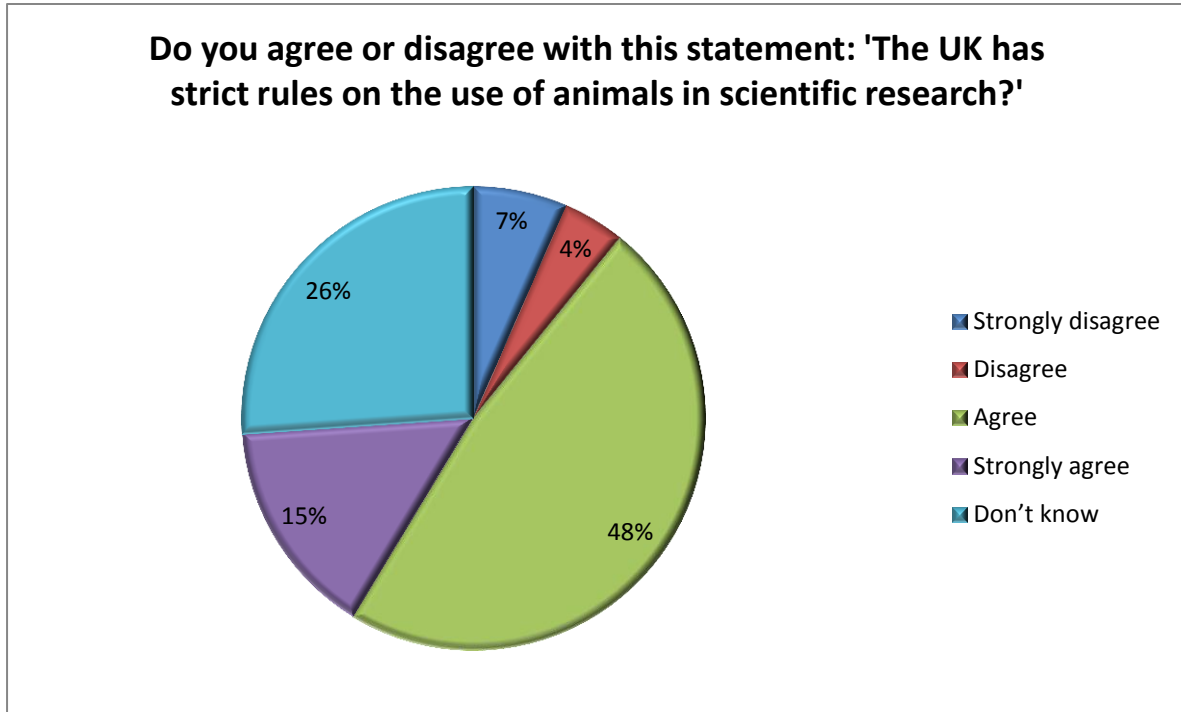


2.



**Other** – Animal research should only be used to test medicine. I don't agree if it's for makeup only medicine. It depends on the research; research where the animals feel pain is cruel, and for example, giving animals cancer just to trial cancer drugs.

3.



**Strongly disagree** - I don't think that they are causing unnecessary harm, but more can be done to reduce the amount and the level of harm.

4.

