



full version - color



UNIVERSITY OF  
**LEICESTER**



**Political Studies**  
Association



**UCL**  
Université  
catholique  
de Louvain



SciencesPo.

**CEVIPOF**  
CNRS

**MANCHESTER**  
1824

The University of Manchester



UNIVERSITÉ  
LIBRE  
DE BRUXELLES



Vrije  
Universiteit  
Brussel

# Pathways Project Workshop

## 15 February 2016

### *The Belgian case*

Steven M. Van Hauwaert  
(Université Catholique de  
Louvain)



**DFG** Deutsche  
Forschungsgemeinschaft



**NWO**  
Netherlands Organisation for Scientific Research



fulversion - color

# Who are the CIOs in Belgium?

CIOs	Legislature						Total
	1991-1995	1995-1999	1999-2003	2003-2007	2007-2010	2010-2014	
No	228	174	179	192	187	169	1129 (96.1%)
Yes	5	3	5	12	8	13	46 (3.9%)
Total	233	177	184	204	195	182	1175

- We can identify 46 CIOs (seats) since the early 1990s.
- Specification: Of these 46 CIO observations, 4 separate MPs make up 15 observations
  - ⇒ Frequent re-election
  - ⇒ In: 10 in 1987 | 9 in 2003



full version - color

# Where do they come from?

CIOs				Parents CIOs			
Born in BE	Freq.	Birth Country	Freq.	Not born in BE	Freq.	Birth Country	Freq.
Yes	33	Belgium	32	1 parent	16	Algeria	4
		Congo	1			other	12
No	13	Colombia	1	2 parents	30	Morocco	11
		India	3			Italy	9
		Italy	1			Turkey	5
		Morocco	6			other	5
		Turkey	1				
		United States	1				
Total	46		46				



fulverson . calder

# More gender equality

## General population

Gender	Freq.	%
Male	878	74.72
Female	297	25.28
Total	1175	100

## Non-CIOs

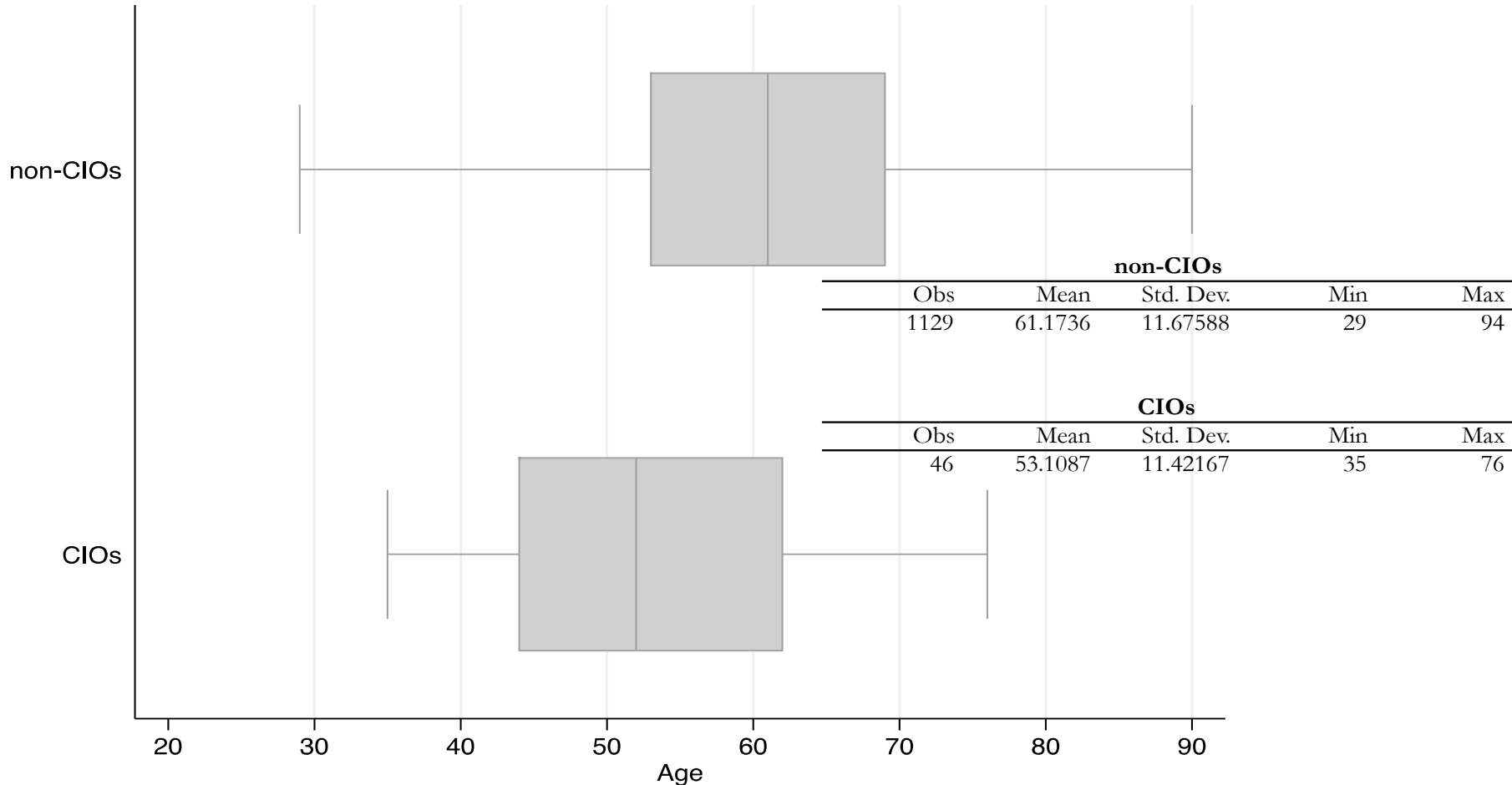
## CIOs

Gender	Freq.	%	Gender	Freq.	%
Male	857	75.91	Male	21	45.65
Female	272	24.09	Female	25	54.35
Total	1129	100	Total	46	100



full version - color

# Younger CIOs

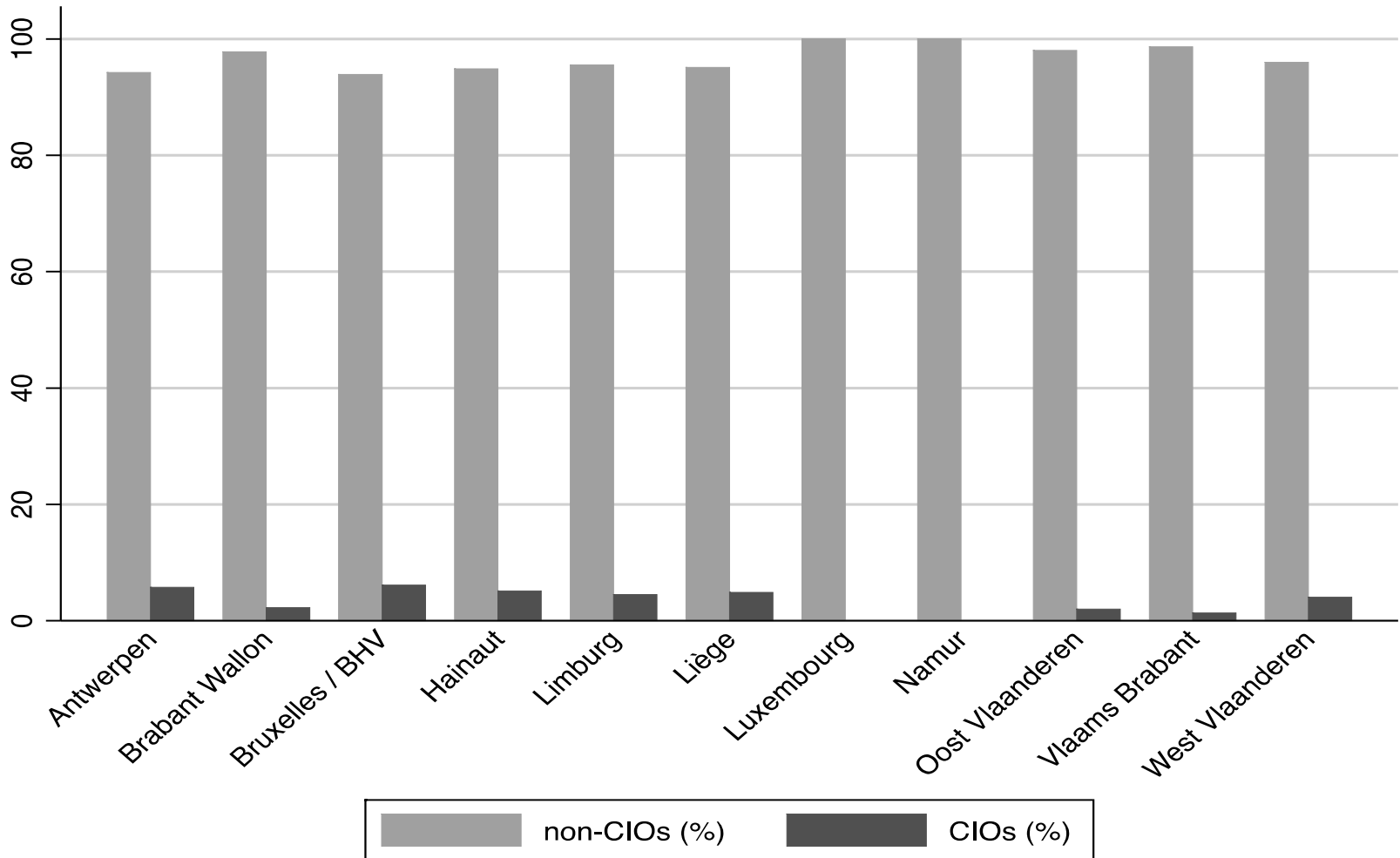


All results are preliminary and subject to change, as well as interpretation



Full version - color

# CIO hubs (%)

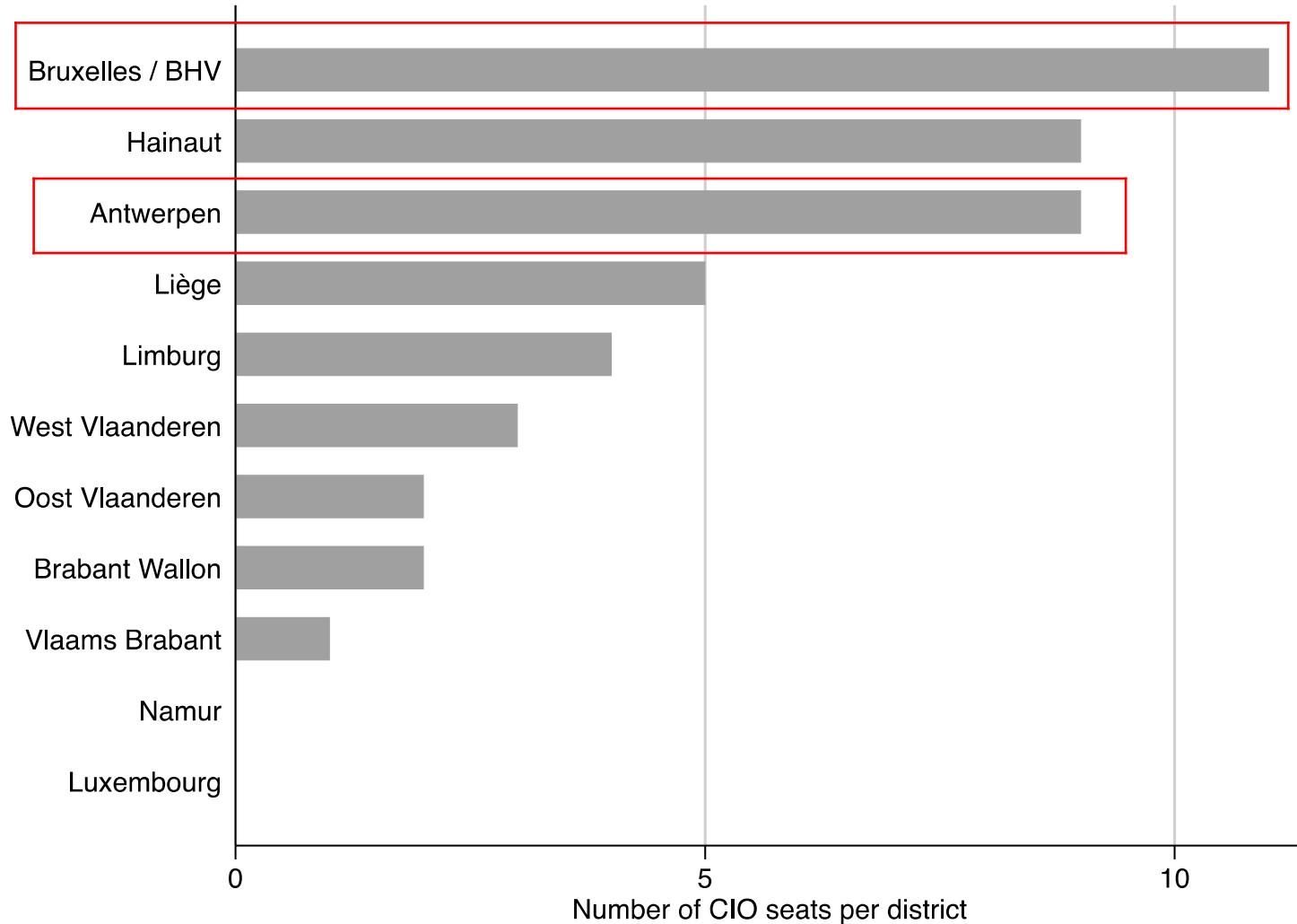


All results are preliminary and subject to change, as well as interpretation



full version - color

# CIO hubs (#)

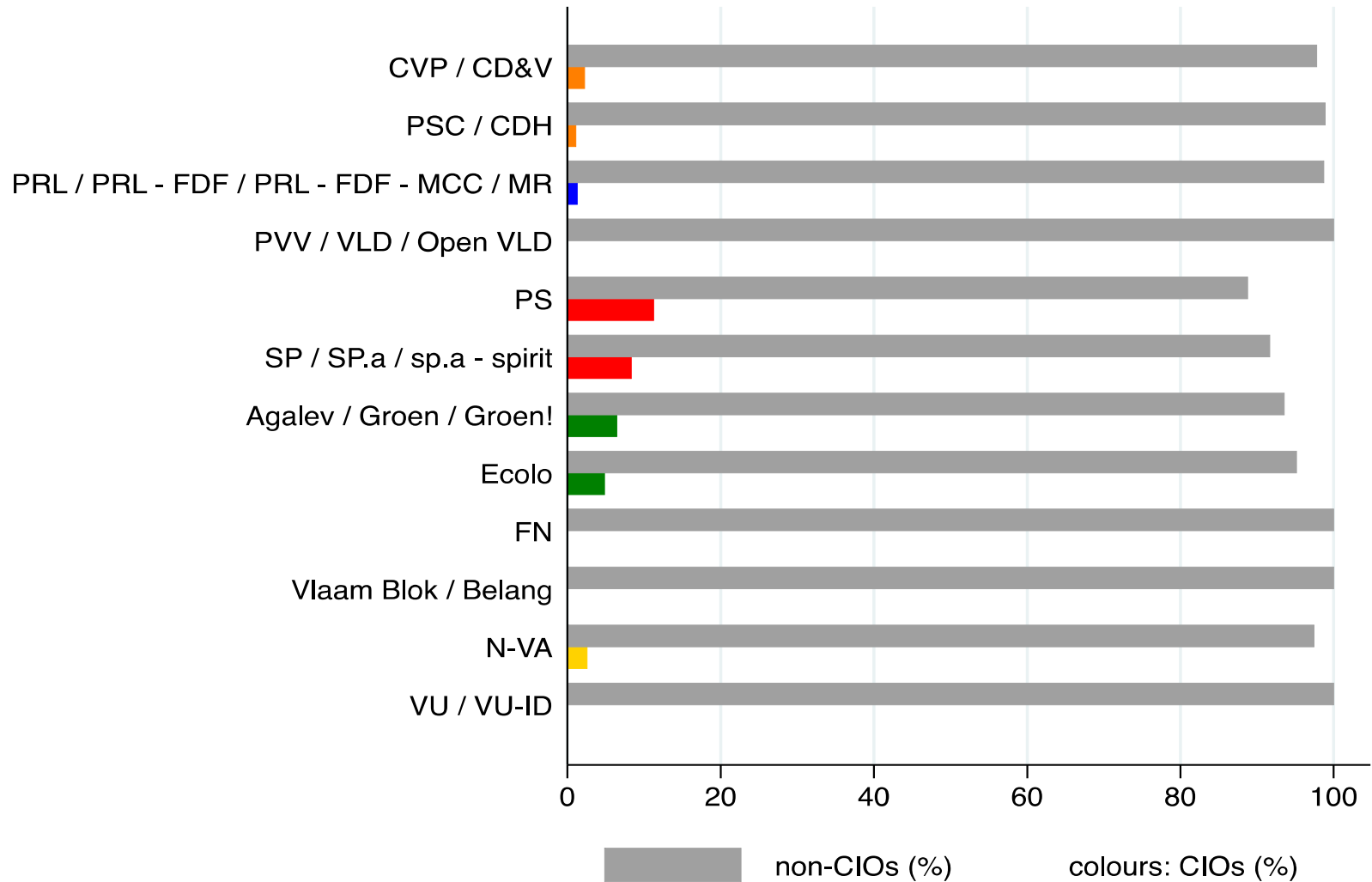


All results are preliminary and subject to change, as well as interpretation



fullversion - color

# Partisan affiliation (%)



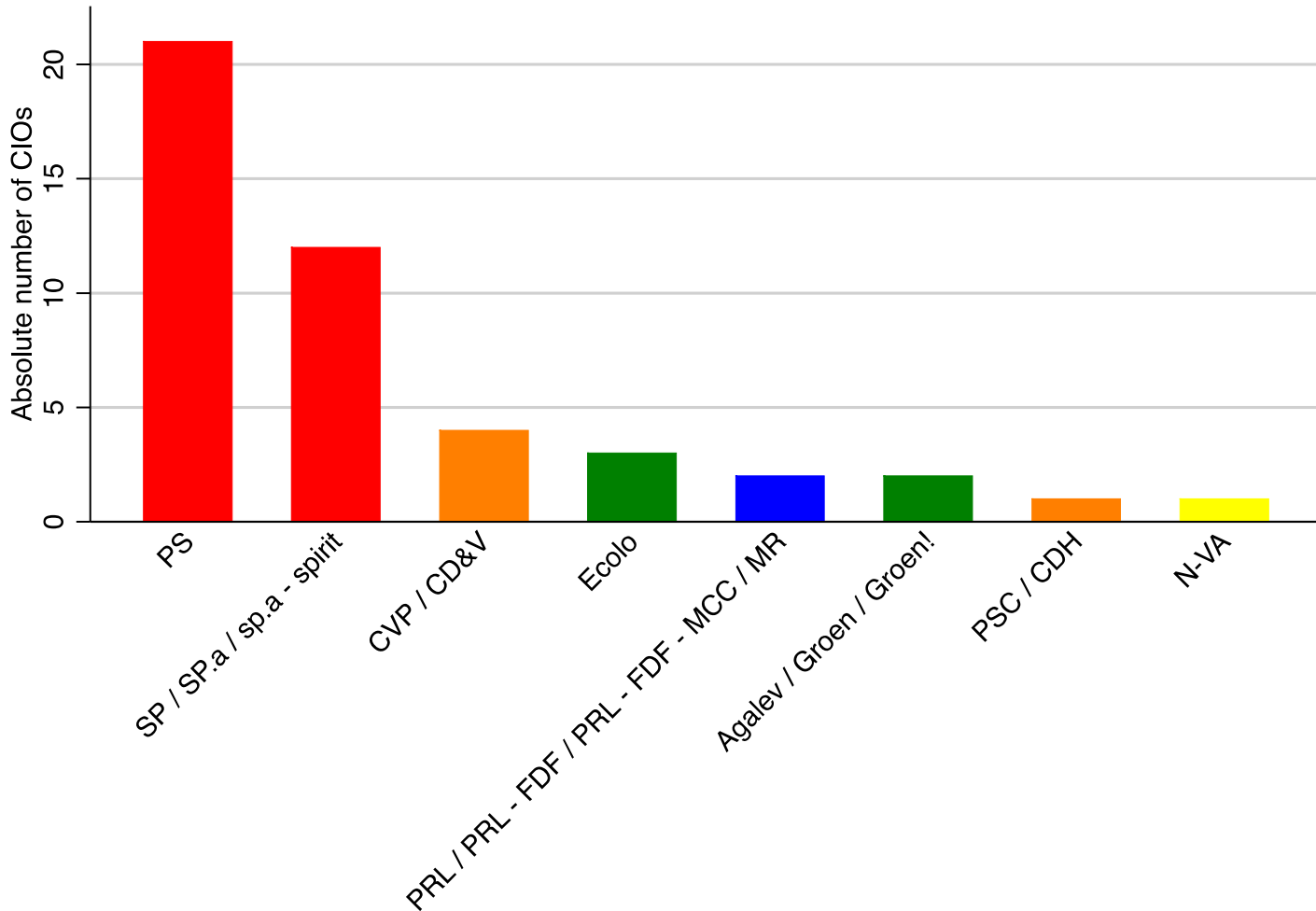
All results are preliminary and subject to change, as well as interpretation





fulversion - color

# Partisan affiliation (#)



All results are preliminary and subject to change, as well as interpretation



Full version - color

# Thanks for your attention

- The implementation of PATHWAYS in Belgium is a joint endeavour between the Université Catholique de Louvain (UCLouvain), the Université Libre de Bruxelles (ULB) and the Vrije Universiteit Brussel (VUB)
- Find out more on our website: <http://pathways.eu/>
- Follow us on Twitter: [@PATHWAYS14](https://twitter.com/PATHWAYS14) and [@PathwaysProjUK](https://twitter.com/PathwaysProjUK)