



University of
Leicester

School of Historical Studies

POSTGRADUATE COURSES IN

History



www.le.ac.uk/history

THE Awards Winner
2007, 2008, 2009, 2010, 2011



Contents

Welcome to the School	2
Why study History at the University of Leicester?	3
MA in History	7
MRes in History	9
MA in English Local History	10
MA in Urban History	12
MA in European Urbanisation	14
MA /MSc in Urban Conservation	15
Research Degrees	16
New History Lab	18
Supporting You	19
About the University	20
About the City of Leicester	21

Welcome to the School

The School of Historical Studies has an outstanding reputation for teaching and research across a wide range of chronological and geographical periods. The expertise of our staff enables us to offer a diverse teaching programme and support a large research community. The School is home to two internationally-known postgraduate research centres which deliver our specialist MAs:

- **Centre for English Local History:** established in 1948, the Centre pioneered the national comparative approach to local history. It is the only specifically postgraduate research centre of its kind in Britain and is unique among provincial universities for its holdings in local, regional, and family history
- **Centre for Urban History:** founded in 1985, it has become a major international centre for interdisciplinary research and postgraduate teaching, offering students the only MA in Urban History in the UK

Staff in the School are also heavily involved in three multidisciplinary research centres: the **Centre for American Studies**; the **Stanley Burton Centre for Holocaust Studies**; and the **Medieval Research Centre**. This cutting-edge research feeds directly into our teaching, ensuring you will be learning from those leading developments in your field.

In the following pages you will find details of the various postgraduate degree programmes we offer, which include seven taught masters' degrees, a masters degree by individually supervised study and doctoral degrees. Information is also provided about studying and living in Leicester, including information about the hugely popular and successful New History Lab.

Why study History at the University of Leicester?

Great Choice

We are one of the largest history departments in the UK. This allows us to offer a choice of degrees, including specialist degrees in Urban History and English Local History. Our expertise is broad with active research in subjects and periods ranging from the 5th century to the contemporary world, from local history to globalisation.

International Reputation

Leicester historians have written some of the best histories of recent years and regularly advise and appear on radio and television. Our specialist research centres maintain international reputations in Urban History, English Local History, Holocaust Studies and American Studies. In the 2008 RAE, 50% of research was designated world leading and internationally excellent, and 90% was judged to be internationally significant. This research feeds directly into our teaching, for which we have an outstanding reputation (rated 'excellent' by the independent Quality Assurance Agency). This creates a vibrant and exciting learning atmosphere.

Flexible Study

Our postgraduate degrees offer a great deal of flexibility as all courses, with the exception of the MA European Urbanisation, are available on a full- or part- time basis. In addition the MA in English Local History is available through individually supervised study and is designed for students who are unable to attend seminars on a weekly basis.

International Students

We welcome applications from international students for all our postgraduate masters' degree courses and research degrees. The International Office can provide all the information you need about applying for one of our degrees,

“For undergraduates and postgraduates alike, the School of Historical Studies is both welcoming and scholarly – a belting combination. I graduated with a BA and then MA here six years ago and it left such an impression that, after a spell of time out of academia, I seized the opportunity to return and am now embarking on a PhD. The staff and students in Historical Studies are top notch, as well as the student support provided centrally at the University. It's a genuine privilege to be part of such a community.”

Gervase French, PhD student



including English Language requirements. Information is available at www.le.ac.uk/international

Friendly Environment

At Leicester we believe we offer a special experience to our students by combining a reputation for the quality of our work with a genuinely friendly environment. The School has dedicated postgraduate facilities which help ensure you will be joining a thriving postgraduate community.

Funding Opportunities

The School and University offer a range of scholarships across all disciplines which change from year to year. Students are encouraged to visit the School website for more information regarding the awards available in the year of application.

“I write reports for clients, looking at the impact and tonality of non-advertorial content in newspaper and internet articles, as well as TV and radio broadcasts. My MA in History meant that I could analyse texts, make lengthy material concise, and understand basic statistics to higher level than an ordinary graduate. Report writing is one of the most crucial aspects of my job, and at my interview I could reel off a variety of subjects and essay lengths. Luckily, I could say the same about the presentations, as the staff at Leicester University understood its importance outside the academic bubble. My MA showed I was more than capable, and I think put me ahead of the competition.”

Marie Weir,
Kantar Media Precis,
MA History 2009-10



Historical Studies students have gone on to work in a variety of fields:

- PhD research and academic career
- Civil Service and local government
- Planning and housing administration
- Teaching and adult education
- Project management
- Heritage industry
- Media
- Criminology/social research
- Archives and records
- Business and management

Career Enhancement

A postgraduate degree can offer you a very strong competitive advantage. Research has shown that career choices and your future salary can be considerably enhanced by postgraduate qualifications.

A postgraduate degree in history has the edge over vocational- based postgraduate courses because the skills you learn transfer across a broader spectrum of the job market. These skills include:

- Critical analysis of textual, visual, and material evidence.
- Statistical analysis and database design.
- Working with new technologies, e.g. websites, graphics packages, Geographic Information Systems.
- Advanced written and oral presentation skills.
- Time management and independent working on a large-scale research project.

As a postgraduate student in the School you will have the opportunity to be involved in the planning of meetings and conferences, and possible opportunities for teaching and demonstrating to undergraduate students which all enhance your career development.

Our postgraduate degrees are also designed to enhance the careers of existing teachers, educationalists, heritage workers, museum curators, and archaeologists who wish to develop further skills and interests, or who wish to acquaint themselves with current scholarly approaches and debates.

Dedicated Facilities

Our Salisbury Road campus contains dedicated postgraduate facilities within the Marc Fitch Historical Institute, five minutes walk from main campus. The institute is housed in three attractive Victorian villas, which contain workspaces and essential resources for advanced research, including:

- Audio suites attached to the East Midlands Oral History Archive.
- Map room which contains a complete coverage of England and Wales Ordnance Surveys and a large collection of historical maps and prints.
- Marc Fitch Library, covering all aspects of local history and areas of England.
- A specialist urban history library.

The Centres for English Local History and Urban History are housed in Salisbury Road. The School also has a strong presence on the main campus. The main School office and the three multidisciplinary centres attached to the School are located in the Attenborough Tower. The greater part of the third floor of the main university library is dedicated to history.

Multi-Media Archival Collections

Postgraduates can draw on the resources of an important archival collection unique to the University of Leicester and which is conveniently located in the Marc Fitch Institute. The East Midlands Oral History Archive (EMOHA) contains recordings from the region. EMOHA also has its own interviewing programme, and provides advice, training and support for organisations, students and other individuals who are interested in developing their own projects.

www.le.ac.uk/emoha

Stanley Burton Centre Holocaust Resource Room

The Stanley Burton Centre has its own Holocaust Resource Room in the Attenborough Tower where members can meet to co-ordinate and develop activities, as well as hosting events. The room contains primary sources, books, journals, DVDs and CD-ROMs as well as offering its own computing facilities for the Centre's students. The room is run by a team of student volunteers who supervise the use of the collection, catalogue resources, compile a newspaper collection on topics relevant to the Centre and are involved in other related activities. www.le.ac.uk/hi/centres/burton



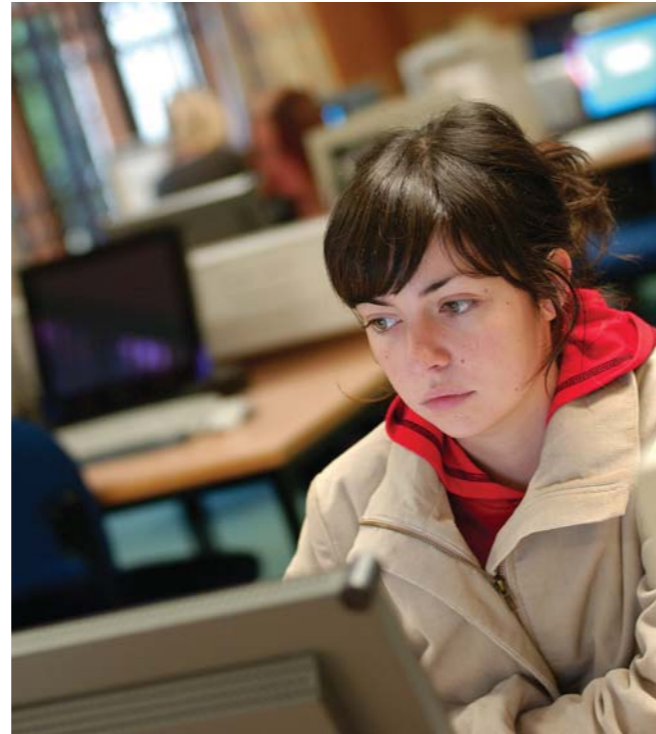
Special Collections and Archives

The University Library has several special collections, which have been donated to or purchased by the Library. The core of the Special Collections are donations of rare books, manuscripts and archives. These collections include:

- Medieval manuscripts collection plus 500 early printed Bibles (including a 1535 Coverdale Bible).
- A rich and diverse collection of Incunabula, books printed before 1501.
- A large collection (c. 800 items) of pamphlets and tracts dating from the 16th to the 19th centuries relating to the history of the period and in particular the Reformation and the English Civil War.
- The largest collection of topographical and local history books outside the copyright libraries.
- The Transport Collection with over 500 items related to the history of all forms of transport, with an emphasis on British railways.

The University Library also subscribes to a large number of electronic collections.

www.le.ac.uk/library/collections/special.html



Seminars

The Marc Fitch Historical Institute has dedicated seminar rooms where specialist research seminars are held. The School runs a number of seminar series each year including American Studies, Early Modern History, English Local History, Holocaust Studies, Medieval History, Urban History, as well as a general School of Historical Studies seminar series which postgraduate students are encouraged to attend.

Postgraduate students are also encouraged to organise their own research seminars and other events which are open to all staff and students.

The College of Arts, Humanities and Law and the University also hold a number of seminars and research events each year, which include 'The Intrepid Researcher' series which is designed to encourage researchers to explore and engage with new methods and methodologies.

Facilities in other departments

Students studying the MA Social Change and Resistance also have access to the dedicated facilities and resources in the Department of Geography, which include computer labs, a student study centre and a virtual reality theatre.



MA in History

This MA offers a range of modules designed to suit a wide spectrum of historical interests—varying from 'Anglo-Saxon England' to 'Religion in Modern Russia'. The wide-ranging nature of the programme means that you can choose to expand the breadth of your historical knowledge by selecting from options which have a broad chronological range and an international scope.

The MA in History gives you the opportunity to:

- Pursue a broad range of historical topics.
- Produce a dissertation based on independent research or fieldwork enabling you to study in depth a topic of your choice.
- Gain training and experience in preparation for continuing research at PhD level.
- Enhance your attractiveness to employers by developing key transferable research skills

Duration and Entry Requirements

One year full-time or two years part-time. An upper second class honours degree or its equivalent is preferred.

Applications are also invited from those who do not possess the normal admission requirements but who can show enthusiasm and competence by having attended relevant certificated courses, by submitting published work or by writing qualifying essays to a first degree standard.

Funding Opportunities

The School and College regularly offer fee bursaries for our MA programmes. Please see the School website for current details.

Course Structure

The degree is divided equally between two core research training modules and two optional history modules.

Semester One: you take the core module 'Historical Research Methods' which provides you with a thorough grounding in research methods, plus one optional module.

Semester Two: you take the core module 'Social Theory and History' plus one optional module.

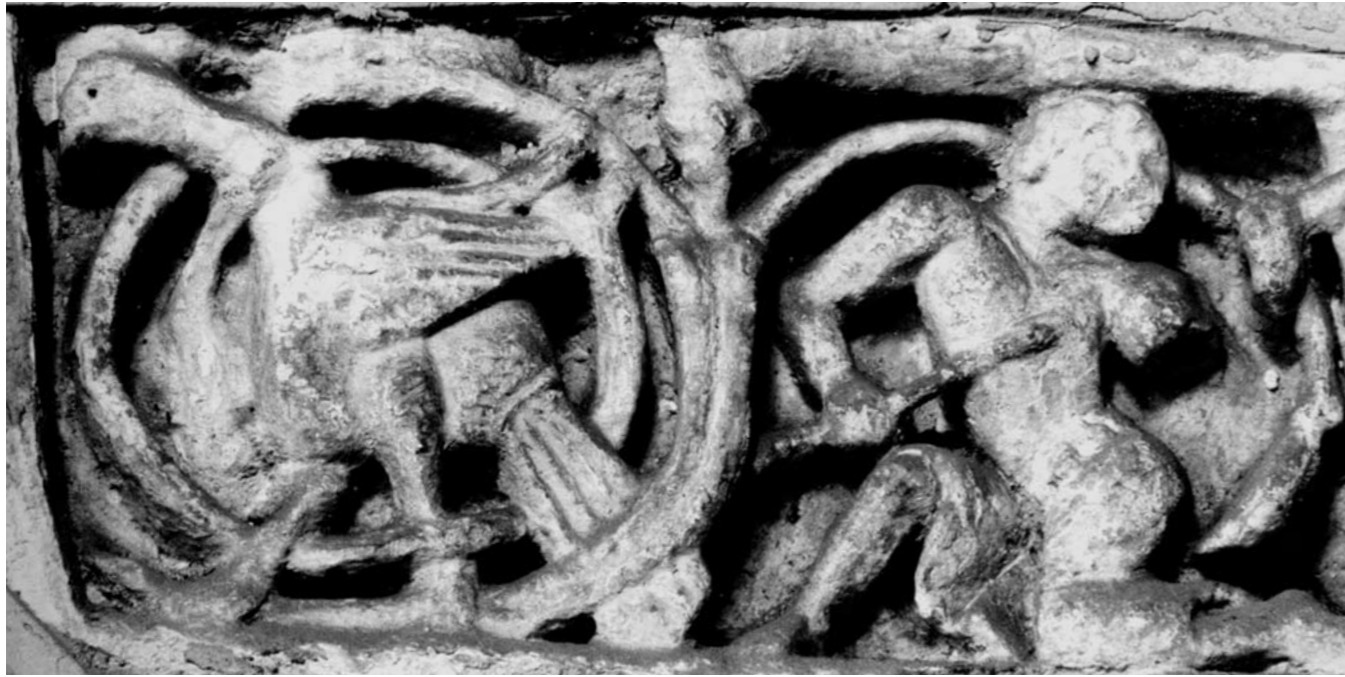
In recent years (subject to availability) optional modules have included:

Medieval Options:

- Anglo-Saxon England and the Continent, 700-900.
- The Crusades in the Eastern Mediterranean, 1095-1291.
- Court and Culture in 14th-century England.

Early Modern Options:

- Monarchy, Politics and Government in the Reign of Louis XVI of France, 1774-1789.
- The Country House and the Grand Tour in the 18th century.



Modern History:

- The Women's Suffrage Movements in the United States and Britain, 1840s to 1920s.
- Victorian Society.
- Church, State and People: Religion in Modern Russia.
- White Supremacy: Rhetoric and Reality in the USA.
- Discovering the Holocaust.
- National Socialism, Holocaust and Cinema.

You may also take other optional modules offered by other MA degrees within the School

Dissertation

This is an important opportunity for students to develop their research expertise by exploring an approved research topic of their own choosing under the direction of a supervisor. The dissertation consists of a maximum of 20,000 words. Recent dissertation topics have included:

- The impact of the Civil War on everyday life in the East Midlands, 1640-166.
- The Catholic Threat to (the Governments of) England and Scotland, 1570-1603.
- A study investigating the changing motivations in the perpetration of white-on-black violence during the antebellum, reconstruction and segregation periods.
- Reactions to the Russian Revolutions in Britain, 1916-1918

- The Women of the Special Operation Executive: Recruitment, Training and Patronage.

Teaching and Assessment

Each of the course modules is taught on the basis of small group seminars. Assessment varies between modules (particularly in the case of options), but normally takes the form of an extended essay (4-5,000 words). In the case of the 'Historical Research Methods' module, assessment includes practical exercises and presentations as well as essays.

Teaching Times

The core research modules are normally taught on Monday or Wednesday afternoons. Optional module teaching times are usually negotiated between tutors and students.

Part-time students

The requirements of the course are spread over two years, with students taking a core research training module in each year. Students take 'Historical Research Methods' in semester one of the first year and an optional module in semester two. In the first semester of your second year you take another optional module followed by the module 'Social Theory and History' in the final semester. As with full-time students you will complete a 20,000 word dissertation in your second year. All modules are taught to full- and part-time students together ensuring that part-time students are integrated into the postgraduate community. Some modules are available in the evening for those who need to fit their studies around working hours and other commitments.

MRes in History

This is an exciting new programme which offers you the opportunity to develop your research skills at the same time as deepening your historical knowledge. The course provides training in historical research methods and skills, and the support necessary to carry out an extended piece of research on a topic of your choice.

The MRes in History enhances your attractiveness to employers by developing key transferable skills as well as being an excellent foundation for an MPhil or PhD.

This MRes gives you the opportunity to:

- Carry out an extended research project to a standard that might form the basis of a publication.
- Gain training in research methods necessary for further academic research.
- Enhance your historical understanding and develop your own chosen area of expertise.
- Develop key transferable research skills.

Duration and Entry Requirements

One year full-time or two years on a part-time basis. An upper second class honours degree or its equivalent is preferred. Applications are also invited from those who do not possess the normal admission requirements but who can show enthusiasm and competence by having attended relevant certificated courses, by submitting published work or by writing qualifying essays to a first degree standard.

Funding Opportunities

The School and College regularly offer fee bursaries for our masters' degree programmes. Please see the School website for current details.

Course Structure

The course consists of two taught modules and an extended dissertation.

Semester One

- 'Historical Research Methods' which provides you with a thorough grounding in research methods, plus either
- 'Historiography' where you will explore the historiography of your chosen dissertation topic, or
- An optional module. If taking an option you would choose a module running within the MA in History programme (see p.7)



Semester Two

You would carry out the work for your extended research topic.

Dissertation

The core aspect of the MRes is the extended piece of research. The dissertation consists of a maximum of 30,000 words and allows students to pursue a major independent research project under the direction of a supervisor from within the School.

Teaching and Assessment

'Historical Research Methods' is delivered through seminars and workshops. Students work closely with their research supervisor on their literature review and dissertation. Other modules involve seminars, workshops and directed reading. All taught modules are assessed by coursework.

Teaching Times

The core research modules are normally taught on Monday or Wednesday afternoons. Optional module teaching times are usually negotiated between tutors and students.

Part-time students

The requirements for the course are spread over two years. During the first year students take the module 'Historical Research Methods' in semester one and either 'Historiography' or an optional module in semester two. In the second year students spend both semesters working on their dissertation.

“The MA in English Local History has been the perfect study experience for me, offering all the essential elements for a thorough grounding in the subject whilst simultaneously providing the flexibility to allow me to pursue my own particular interests.”

Susan Kilby,
ESRC-funded student on the 1+3
programme (MA and
PhD) in English Local History



MA in English Local History

The MA is based within the Centre for English Local History. It is the most comprehensive course of its kind, providing training in the ‘Leicester’ approach to local, regional and contextual family history. The Leicester approach is interdisciplinary and is concerned with the interaction between society and landscape and uses comparative methods to test hypotheses and interpretations, which might include comparisons with places outside the British Isles. Staff specialisms reflect the diversity of regions and approaches covered by the MA.

The MA provides you with the opportunity to:

- Acquire research skills relevant for writing a PhD.
- Uses methodologies of other disciplines in your research such as archaeology, architecture, art history, folklore, geography and literary studies.
- Enhance your IT skills through research analysis.
- Learn palaeography and read early modern documents.

The course will particularly appeal to those interested in social, cultural, economic and landscape history.

Duration and Entry Requirements

One year full-time or two years part-time. Normally a first or second class honours degree in an appropriate subject from a British university or its equivalent from overseas. In some cases, you may be able to enrol through passing a qualifying test to first degree standard. This flexibility reflects the fact that although students use the MA to enhance their career opportunities, many are interested in local history for their own personal interest.

Funding Opportunities

The School and College regularly offer fee bursaries for our MA programmes. Please see the School website for current details.

The Friends of the Centre for English Local History offer a number of bursaries each year. The closing date for these is 1 August each year. English Local History students can also apply to the Hoskins Duffield Fund for assistance with their expenses incurred while studying. Further information about these funds, and information about other funding options is available on the Centre website.

Course Structure

Students take five core modules and write a dissertation

- Medieval Landscapes, 400-1500
- The Local Identities and Palaeography of Early Modern England, 1500-1700
- Community, Conflict and Change in England and Wales from the late 17th Century to the early 19th Century
- Understanding English and Welsh Communities and Cultures, 1800-2000
- Field course – comparative study of landscapes as artefacts of historic cultures (broadly defined to include, e.g. religion, work, leisure, class) in a region outside the Midlands

Dissertation

This provides students with the opportunity to develop their research expertise by exploring an approved research topic of their own choosing under the direction of a supervisor. The dissertation consists of a maximum of 20,000 words. Recent dissertation topics have included:

- The status of women in Surrey, c. 1235-1348.
- Landownership, rents and tenures on Dartmoor, 1840-1910.
- A study of the siting of churches in southern Warwickshire.
- The growth of industry in Barrow-on-Soar, Leicestershire 1700-1900.
- Representations of artisans from the eighteenth to the early twentieth century.
- A study of the Polish community in Leicester.

Teaching and Assessment

Teaching is by lectures, practical classes with sources, computer demonstrations, Saturday schools and a week-long residential field course. Assessment is by projects, reviews, skills test and dissertation.

Teaching Times

Teaching is by weekly classes (either in the evening or, if preferred, in the morning). Attendance at a small number of Saturday schools and the field course (usually in April) is also necessary.

Part-time students

The requirements for the course are spread over two years. As with full-time students you complete a 20,000 word dissertation.



Centre for English Local History

School of Historical Studies,
Marc Fitch Historical Institute,
University of Leicester,
5 Salisbury Road, Leicester, LE1 7QR

Tel: +44 (0)116 252 2762

Fax: +44 (0)116 252 5769

Email: elhinfo@le.ac.uk

Web: www.le.ac.uk/elh

“The MA Urban History has definitely been a challenging year, but equally – rewarding and enjoyable. It has also cultivated in me a passion for history and given me a strong idea of where I want to be next.”

Mark Small,
MA Urban History



MA in Urban History

Taught within the Centre for Urban History, this is the only MA in Urban History in the UK. The MA is a highly-regarded and well-established degree programme which attracts students from around the globe.

The MA offers a broad interdisciplinary introduction to the study of the city from classical antiquity to modern times. It also has two specialist pathways which enable you to focus on particular aspects of urban history if you choose. Students who select one of these pathways graduate with either an MA Urban History: Global Cities or MA Urban History: Conservation, Heritage and Planning. Those who do not wish to specialise receive an MA in Urban History.

The course will have strong appeal to social, economic and cultural historians, planning specialists, geographers, art historians and all those with an interest in the study of the city and of individual communities.

The MA gives you the opportunity to:

- Study the history of urban society and culture in depth through general or specialist pathways all utilising interdisciplinary approaches.
- Gain training in research methods necessary for further academic research and invaluable for commercial research.
- Produce a dissertation based on independent research on a topic of your choice.
- Enhance your historical understanding and develop your own area of expertise.

Duration and Entry Requirements

This course is available on a one-year or two-year (part-time) basis. An upper second class honours degree or its equivalent is preferred.

Funding Opportunities

The School and College regularly offer fee bursaries for our MA programmes. Please see the School website for current details. The Centre for Urban History also assists students in a broad range of academic activities including conference attendance.

Course Structure

Semester One: all students take two core modules

- ‘Historical Research Methods’: this provides you with a thorough grounding in research methods and is essential for students wishing to go on to study a research degree.
- ‘Concepts in Urban History’: develops your understanding of theories and concepts for the analysis of historical data.

Semester Two: Optional Modules

During the second semester you will have the opportunity to pursue specialist pathways or select from a variety of options to suit your varied interests in urban history (subject to availability).

MA Urban History: Global Cities Pathway

- Colonial Cities in British Asia and Africa.
- The European and the American City: Concepts and Realities.



MA Urban History: Conservation, Heritage and Planning pathway

- Architecture and Planning in 20th-century Europe and America.
- Conservation, Heritage and the Urban Environment.

MA Urban History (general pathway)

Students for this pathway can choose any two modules from the specialist pathways above or from the following modules (subject to availability):

- Urban Topographies, 1540-1840.
- Vices and Virtues: Behaving and Misbehaving in British Society, 1850-1950.
- Testimonies of the City.

Dissertation

This is an important opportunity for students to develop their own research expertise while working on an approved topic under the direction of a supervisor. The dissertation consists of a maximum of 20,000 words. Recent dissertations demonstrate the range of research undertaken by MA Urban History Students:

- Home and Social Identities: Middle-Class Rome, c. 1945-1973.
- Survival Strategies: The Body, the Patient and the Druggist.
- Crime in the Household: Domestic Servants in the Proceedings of The Old Bailey.
- Female Friendly Societies and the Lives of Widows and Spinsters.
- The Construction of London's Chinatown, 1900-1990.

Teaching and Assessment

Teaching at the Centre for Urban History is innovative, of a high quality and conducted by enthusiastic and experienced staff. Each of the course modules is taught on the basis of small group seminars. There are also visits to local and national archives, trips to sites of historical relevance, workshops and research seminars from distinguished visiting urban historians. Online tutorials, datasets and web resources have been developed to assist students in their project work and dissertations. Assessment varies between modules and takes the form of essays, oral presentations and projects.

Part-time Students

The requirements for the course are spread over two years. During the first year students take the module ‘Historical Research Methods’ in semester one and an optional module in semester two. In the second year you take the module ‘Concepts in Urban History’ in semester three and another optional module in semester four. As with full-time students you complete a 20,000 word dissertation.

Centre for Urban History

School of Historical Studies, Marc Fitch Historical Institute, University of Leicester, 5 Salisbury Road Leicester, LE1 7QR

Tel: +44 (0)116 252 2378

Fax: +44 (0)116 252 5769

Email: cuh@le.ac.uk

Web: www.le.ac.uk/urbanhist

MA in European Urbanisation

This is an interdisciplinary course which examines the city and its impact on European development from the earliest times to the present day. Students taking the course are able to study in two of the following universities:

- Centre for Urban History, University of Leicester.
- Department of History, University of Stockholm.
- Department of Geography, University College Dublin.
- Department of History, Technical University of Berlin.
- Department of History, Technical University of Darmstadt.

The first semester is spent in Leicester. In the second semester you can choose to study in one of four other universities listed above or you can decide to remain at Leicester.

This MA give you the opportunity to:

- Gain direct experience of living and studying in two of five European cities.
- Study in academic centres of excellence.
- Gain training in research methods, statistical analysis, electronic resources and database design.
- Produce a dissertation based on independent research.

Duration and Entry Requirements

This course is available on a one-year, full-time basis only. A minimum of an upper second class honours degree or its equivalent is preferred.

Funding Opportunities

Funding opportunities are the same as for the MA in Urban History. All students taking this MA receive a maintenance allowance for the second semester abroad. The Centre for Urban History assists students in a broad range of academic activities including conference attendance and exchange programmes.

Course Structure

Semester One

- 'Historical Research Methods': this provides you with a thorough grounding in research methods and is essential for students wishing to go on to study a research degree
- 'Concepts in Urban History': develops your understanding of theories and concepts for the analysis of historical data



Semester Two

In the second semester you study more specialised options which vary depending on which university you choose. Modules reflect the specialisms of each department. Visiting students to Leicester choose options running within the MA in Urban History programme (see p. 13)

Dissertation

This is an important opportunity for students to develop their own research expertise while working on an approved topic under direction of a supervisor. The dissertation consists of a maximum of 20,000 words and is usually supervised by University of Leicester staff.

Teaching and Assessment

This course is taught using the more traditional small group seminars but also uses the latest technology – online learning and DVD lectures. Assessment for modules varies between options. Some are assessed by coursework alone and others by a mixture of coursework and written 'open' examination.

MA /MSc in Urban Conservation

This is an exciting new MA/MSc that brings together the unique strengths of the University of Leicester in areas of international excellence, such as Urban History, Museum Studies, and Materials Science. Taught in collaboration with leading conservation agencies, it provides a professional grounding in an area that is fast becoming a vital concern to people and governments around the world.

The course combines the historical study of cities and conservation practice with an understanding of architecture, material culture and materials science to provide a multi-disciplinary grounding in an area of growing significance for planning, tourism and urban policy.

The course will have a strong appeal to social, economic, and cultural historians, planning specialists, geographers, art historians and all those with an interest in the study of the city and the practice of planning and conservation.

The MA gives you the opportunity to:

- Enhance your historical understanding of and acquire a range of practice-based skills.
- Develop specialist knowledge in the field of urban conservation and preparation for professional practice within it.
- Gain training in research methods necessary for further academic research or commercial and practice-based research.
- Write a dissertation based upon independent research on a topic of your choice.

Duration and entry requirements

This course is available on a one-year or two-year (part-time) basis. An upper second class honours degree or its equivalent is the normal entry requirement although we also welcome applications from those with experience of the field.

Funding opportunities

The School and College regularly offer fee bursaries for our MA programmes. Please see the School website for current details. The Centre for Urban History also assists students in a broad range of academic activities including conference attendance.

Course Structure

The course will be offered for the first time in 2011. Modules will cover the following areas:



- The history of conservation.
- Current conservation policy and practice.
- Sustainable cities.
- Material culture and the science of preservation.
- Conserving historic sites and areas.
- Project management.
- Research design, methods and practice.

Dissertation

This is an important opportunity for students to develop their own research expertise while working on an approved topic under the direction of a supervisor. The dissertation consists of a maximum of 20,000 words.

Teaching and Assessment

Teaching will be delivered by Centre for Urban History staff and professional practitioners and employers. Students will have the opportunity to engage in fieldwork as well as small group seminars. Assessment will include essays, oral presentations and a formal research-based dissertation of 20,000 words. Practice-based assessments will also be conducted on activities such as project management to develop practical know-how as well as critical skills.

Part-time students

The requirements for the course are spread over two years. As with full-time students you complete a 20,000 word dissertation.

“Being a postgraduate student gave me time to focus intensively on something I was really interested in. This is a luxury and I appreciate every moment of it!”

Siobhan Begley,
PhD student



Research Degrees

The School provides opportunities for doctoral research in a wide range of subjects in British, European and Global history in the medieval, early modern and modern periods. The specialist research interests of staff cover a variety of chronological periods and geographical areas. There are particular concentrations of expertise in:

- American History, in particular North America.
- Medieval History.
- Modern and Contemporary British and European History.
- English Local History.
- Urban History.
- Holocaust Studies.
- The Wider World, in particular its cultural, imperial, commercial and economic settings.

Information about staff and their research interests can be found at

www2.le.ac.uk/study/postgrad/research/historicalstudies/staff

The School has an international reputation for the quality of its research, with members of staff producing both individual research leading to important monographs and articles in top

journals, and, collaborative research. Increasingly, staff in the School are engaged in inter-disciplinary research, frequently crossing departmental boundaries and resulting in work which enables doctoral students to work alongside them on a particular project.

Degree Structure

Students can carry out postgraduate research leading to the award of either a PhD or MPhil. An MPhil is a research-based degree of one or two years' duration (two to four years part-time) for which students produce a 50,000 word thesis of original material. PhD degrees have a registration period of two to four years' full-time (three to six years part-time) and require an 80,000 word thesis.

All students are allocated a primary and secondary supervisor, with progress being monitored by the School Postgraduate Committee and thesis committee.

Doctoral Training

All doctoral research students in the School undertake the College of Arts, Humanities and Law Graduate School Research Training Programme, which provides general research training.



Facilities for research students

PhD and MPhil students in the School are housed in the Marc Fitch Historical Institute which provides dedicated study facilities. Full-time students are allocated dedicated working space in Salisbury Road, with students being provided accommodation in shared offices equipped with personal computers.

Teaching opportunities, including training, are also available to students at the appropriate stage in their research.

Funding Opportunities

The School and University offer a range of scholarships each year. Please see the School website for further details. Smaller grants and bursaries for conference and research expenses are also available and staff have considerable experience in helping students apply for funding.

Developing your PhD proposal

Staff in the School are happy to help you develop your research proposal. Students should contact the relevant staff member(s) direct with a brief outline of your proposed research or, alternatively, contact the Postgraduate Administrator who will direct you to a suitable member of staff.

Examples of recent MPhil/ PhD projects:

- The women's suffrage movement in late nineteenth century Pennsylvania.
- Shaping the City: Urban Reconstruction in the British zone of Germany 1945–1949.
- Medicine and Poverty: A Study of Poor Law Medical Officers and their Pauper Patients, 1850-1920.
- Liberal Defectors – An examination of the MPs who defected to and from the Liberal and Liberal Democrat Parties since 1918.
- Deserted villages in Northamptonshire c.1300-1500.
- Relationship between British Army and Police in Ireland 1919-21.
- The Impact and Representation of the Holocaust upon British Jewry in Three Generations.
- Calcutta, From Fort to City: A study of the growth of a planned Colonial settlement.
- Illegitimacy in South and South West Wales in the Eighteenth and Nineteenth Centuries.



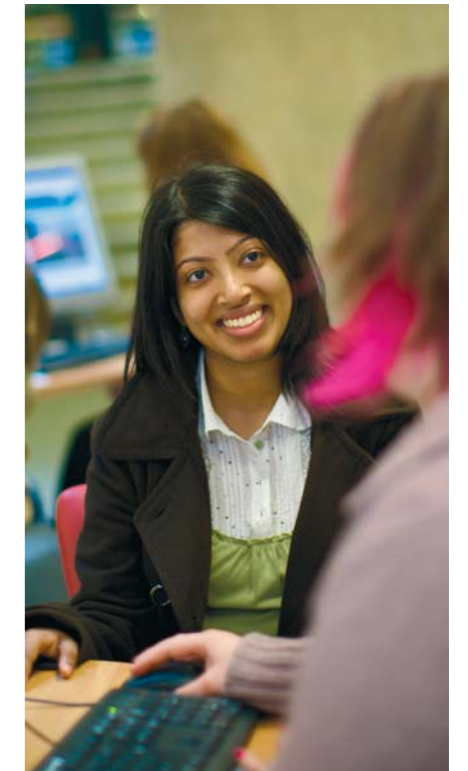
New History Lab

'The LAB is an act of mild insurrection' claimed The Independent when it ran a story on Leicester's School of Historical Studies. The LAB was set up in 2008 by postgraduates who wanted something friendlier than a seminar and more interactive than a lecture. Since then it has never been short of supporters. One meeting saw over 70 students turn up to hear a 'Mystery Guest' give the 'Secret Lecture'. Their trust turned out to be well placed. Melvyn Bragg talked about his Life in History and stunned his audience with a genuine desire to speak and be spoken to.

The LAB meets on Friday afternoons in term time. The format is well established – lots of tea and homemade cake and catching up with friends and colleagues, then the speaker, then the discussion, then over the road to The Marquis of Wellington, site of many a famous battle. As Matt Neale, one of the founders of the LAB, told The Independent, "we wanted to make History a good and confident activity where people could meet old friends and make new ones while indulging their passion for history". Our programme is always a bit different. We try to see History afresh and make the LAB work for what we need, including sound advice and good community.

A student steering group decides what is done and how it's done, and the Postgraduate Tutor is a member of that group. There are outings ('peregrinations' in LABSPEAK) as well as laboratories. In 2009, the LAB went to Manchester for the day to be entertained and instructed by our friends from the Manchester HISTORY LAB. Sixty of us split into three groups looking at Marx and Engels' Manchester in the morning; Cottonopolis Manchester in the afternoon; and Alan Turing's Manchester in the late afternoon and early evening.

So if you are planning to become a postgraduate student at Leicester, don't forget to pack your LAB coat. You are guaranteed a warm welcome at the NEW HISTORY LAB.



Supporting You

Personal Tutor

Help and advice is available to all students throughout their degree programme, both with academic work and with any problems that may affect your study. Students are allocated a personal tutor who is there to provide support and guidance and who will be concerned with both your academic and personal welfare.

Computing

The School is committed to enhancing the quality of teaching through the use of computing applications. All modules are supported by material on the Blackboard Virtual Learning Environment. The University has over 1100 computers for student use in designated user areas across campus.

Student Development Zone

The Student Learning Centre provides free one-on-one consultations, workshops and resources to help students enhance their academic and transferable skills.

Special needs

The School welcomes applications from students with special needs. Students with special needs may wish to contact the University before applying for a course to discuss their requirements.

Please contact the AccessAbility Centre on:

Tel: 0116 252 5002 **Email:** accessible@leicester.ac.uk **Web:** www.le.ac.uk/accessability



About the University

Some universities consider their primary purpose to be high quality research, others concentrate on excellent teaching. Here at Leicester we think that the two are not only complementary, they're inseparable. We believe that teaching is more inspirational when delivered by passionate scholars engaged in world-changing research – and that research is stronger when delivered in an academic community that includes students.

We think that a university should be about empowering people to explore what they don't know. We achieve this through passionate, dedicated research and teaching.

When we were named University of the Year for 2008-9 by the *Times Higher Education*, the judges applauded Leicester's very different approach, calling us "elite without being elitist." Of Britain's top 15 universities only one – Leicester – exceeds its government benchmarks for inclusivity.

Our dedication to providing an excellent student experience can be seen in our consistent performance in the National Student Survey. Since the launch of the survey in 2005, Leicester has consistently featured amongst the top-10 universities in England for student satisfaction.

With these ideas at heart, Leicester is reframing the values that govern academia and re-defining what a university needs to be in the 21st century; we are constantly finding new ways of being a leading university.



About the City of Leicester

Leicester is a lively and diverse city with all the activities and facilities you would expect from a major city. This is combined with a friendly and safe atmosphere.

Developments in the city have led to the opening of the Curve Theatre with its unique 'inside out' design where the stage is visible from the street. Further developments in the city's cultural quarter will join the existing museums and galleries within the city, and help to cement Leicester's reputation for culture.

Leicester is a city for individuals and this is shown throughout the city; from the individual shops and boutiques of the Lanes area which rub shoulders with the larger stores and designer shops of the Highcross Leicester shopping development; to the festivals held within the city throughout the year, including the Summer Sundae Music Festival.

This diversity is also celebrated through the city's wide range of restaurants, cafes and music venues which provide something for every taste.

We are passionate about our city with many of our students choosing to locate here after graduation.

CONTACT DETAILS

Historical Studies postgraduate degrees

The Postgraduate Administrator

T: +44 (0)116 252 2378 F: +44 (0)116 252 5769 E: historypg@le.ac.uk W: www.le.ac.uk/history

University of Leicester, School of Historical Studies

The Marc Fitch Historical Institute, 5 Salisbury Road

Leicester LE1 7QR, UK



All information in this brochure was correct at the time of going to press. However, changes and developments are part of the life of the University, and alternations may occur to the programmes and services described in this brochure.



© University of Leicester 2012
Leicester LE1 7RH
UK

www.le.ac.uk