



University of  
**Leicester**

School of Biological Sciences

UNDERGRADUATE COURSES IN

# Biological Sciences

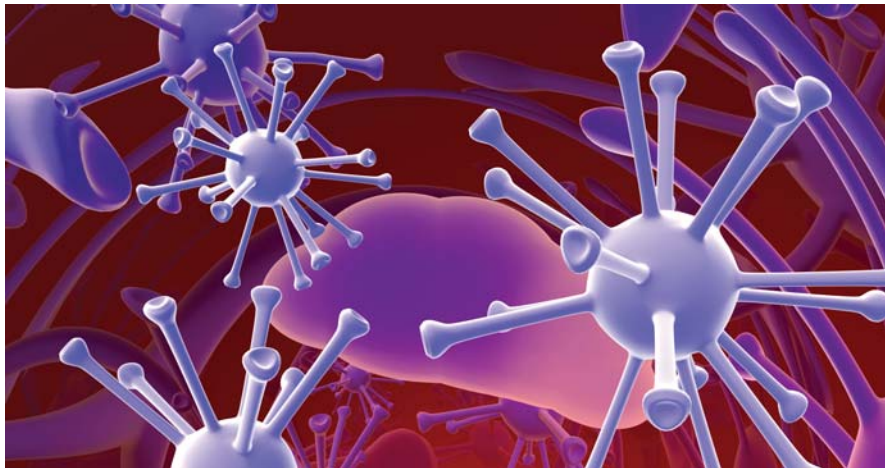


**THE UNIVERSITY OF THE YEAR 2008/9**

[www.le.ac.uk/bs/](http://www.le.ac.uk/bs/)

## Contents

Welcome to the School of Biological Sciences .....	2
Why choose Biological Sciences at Leicester? .....	3
Degrees Offered .....	4
Other Programmes .....	5
All Biological Sciences Degrees – First Year .....	6
Degree Options .....	7-13
Your Learning Experience .....	14
Entrance Requirements and Further Information .....	16-17
The University and City of Leicester ..	19



## Welcome to the School of Biological Sciences

Biological Sciences at the University of Leicester has an international reputation based on our research strengths; with 85% of our research being recognised as internationally significant in the 2008 RAE; and teaching excellence, as evaluated by the Quality Assurance Agency. In recent years, biological research has advanced rapidly and has had an amazing impact on our daily lives with Leicester at the forefront of this.

The University is renowned for the discovery of DNA Genetic profiling (fingerprinting) by Professor Sir Alec Jeffreys which has generated a multi-million pound industry and has had profound effects in the spheres of health and criminal justice. Leicester has also recently been involved in research ranging from the development of vaccines to population effects of pollutants and restoring and conserving ecosystems.

The School comprises four departments, Biochemistry, Biology, Cell Physiology and Pharmacology and Genetics which collaborate in teaching and research. Our ability to offer a wide range of degrees gives our students both breadth of vision and specialised knowledge across the whole range of Biology.

### Contact Details:

To find out more visit:  
[www.le.ac.uk/opensdays](http://www.le.ac.uk/opensdays)

For further information please contact

The Admissions Tutor  
 School of Biological Sciences

**t:** 0116 252 3324/2907

**e:** bsadmin@le.ac.uk

**w:** [www.le.ac.uk/bs](http://www.le.ac.uk/bs)



Martine Hamilton Knight



## Why choose Biological Sciences at Leicester?

- With an average score of 4.4 out of 5 for **overall student satisfaction**, Leicester has the most satisfied students in England amongst mainstream universities (jointly with Oxford). (National Student Survey 2007).
- The University was named '**University of the Year 2008/9**' by Times Higher Education.
- The School was awarded £4.5 million by the Higher Education Funding Council as a '**Centre of Excellence for Teaching and Learning**' (2005 – 2010).
- We offer a range of degrees and **flexible courses** designed to allow you to follow your own interests.
- The School was ranked **3rd in the UK** for Biosciences in the Guardian 2009 University Guide.
- A degree in Biological Sciences offers you a **wide range of career opportunities**. Many of our graduates follow further training for research or teaching careers in Biology often on the MSc or PhD programmes in Leicester.
- Our excellence in teaching is built on a **synergy with international excellence in research** and your learning and teaching is effectively supported by personal tutors and the University's student support services.

“ In the last assessment of teaching quality by the Quality Assurance Agency, Biological Sciences teaching was rated as excellent. In the most recent Academic Audit report, the panel noted: ‘The School of Biological Sciences gives every impression of being a well-run and highly successful School with great potential for further success in the future. Much is to be commended.’ ”

**Teaching Quality Assessment**



## Degrees Offered

### Three-year degrees

BSc Biological Sciences	UCAS code C100 BSc/BS
BSc Biological Sciences (Biochemistry)	UCAS code C700 BSc/BSBc
BSc Biological Sciences (Genetics)	UCAS code C400 BSc/ BSG
BSc Biological Sciences (Microbiology)	UCAS code C500 BSc/BSMb
BSc Biological Sciences (Physiology with Pharmacology)	UCAS code B1B2 BSc/BSPP
BSc Biological Sciences (Zoology)	UCAS code C300 BSc/BSZ

### Four-year degrees

M Biol. Sci. Biological Sciences	UCAS code C000 MBiolSci
A four-year degree with extensive research experience in the final year.	

Four-year degrees with year three spent in industry, in Europe or the USA studying at another university or working in a European research laboratory.

“ Having missed the opportunity to travel before starting University, I jumped at the chance to study abroad during my third year. I embarked upon a research project at the Universidade do Algarve, Portugal, where I had the opportunity to develop new and invaluable skills as well as learn a foreign language and make friends with other Erasmus students from all over the world. I would recommend taking a year abroad to everyone, not only do you get the chance to be involved in a current research project but you'll also have the time of your life! ”

**Amanda Kent-Smith,**  
Microbiology Graduate

## BSc Biological Sciences with a Year in Industry

If you are successful in the competitive selection process you may transfer to the four-year programme and spend your third year working in industry before returning to Leicester for the final year. Previous students have spent their sandwich year working in companies such as Astra Zeneca and Glaxo Smithkline. Others have spent their sandwich year in research institutions such as the Animal Health Institute and Kew Gardens.

## BSc Biological Sciences (European Union)

Through this four-year programme, you may choose to spend your third year taking courses at universities in France, Denmark, Spain, Germany or Finland. Alternatively, you can spend the year working in a research laboratory at the University of the Algarve in Portugal.

## BSc Biological Sciences with a Year in North America

The School also has links with universities in the USA, where you can take your third year of study before returning to Leicester for the final year.

## Other Programmes

The School also offers the following degree programmes, for which brochures are available:

BSc Medical Biochemistry	C720
BSc Medical Genetics	C431
BSc Medical Physiology	B120
BSc Medical Microbiology	C521

We also offer a one year Science Foundation Programme which is run in conjunction with the adjacent Wyggeston and Queen Elizabeth College. This course is designed mainly for mature or international students.





## All Biological Sciences Degrees – First Year

Seven variations of the degrees in Biological Sciences are offered, including the M.Biol.Sci., but all students take the same modules that provide a common first year covering the breadth of modern biology, from molecules to populations.

The first year develops your understanding of information transfer in biological systems, macromolecular structures, enzyme kinetics, membrane structure and function and metabolic pathways. You will be introduced to the cell and developmental biology of plants and animals and their vast diversity, from both evolutionary and environmental perspectives. You will study the basic concepts of genetics and genetic analysis using both traditional and molecular approaches, so that you will be able to describe the effects of mutations and explain how they arise. Physiological processes in whole tissues and body systems, such as the cardiovascular and respiratory systems, are investigated. You will also explore the diversity of plants and animals and the links between environmental and evolutionary biology and how these relate to animal behaviour. There will be an introduction to the structure and function of microorganisms and consideration of their impact on the biosphere.

Modules will also be taken in IT and Numeracy Skills, Study and Communication Skills and Chemistry, which provide an essential basis for second and third year modules, and will help you to develop your key skills.

Throughout the first year, you will gain practical experience in the laboratory classes associated with each module and have the opportunity to discuss topics in the tutorials that form an integral part of the learning process.

### Re the 1st year...

“...the recommended books, approachable lecturers and excellent laboratory facilities with appropriate practical session really helped to reinforce all the new material that we covered.”

**Tina Godfrey**, 2008 Graduate

## Biological Sciences BSc

### UCAS Code C100 BSc/BS

#### Three years full-time or four years with a year in Industry/Europe/USA

After successful completion of the first year, by choosing from the full range of modules available in the subject areas offered, you may begin either to specialise in one of the degree streams in the **second year** or retain a broad approach to the subject. Even within a specialist degree stream, you will still have choice of modules in addition to those core to your specialism.

In the **final year** you will take a selection of advanced modules. If you wish to graduate with a named degree, 75% of the modules must be from within the selection for that degree. All final year students also undertake a laboratory-, field- or library-based research project in which you have the opportunity to carry out an in-depth study of a specific topic that interests you, under the supervision of an acknowledged expert in the field.

## M.Biol.Sci. Biological Sciences

### UCAS Code C000 MBiolSci

#### Four years full-time or five years sandwich or with a year in Europe.

This programme is built on the BSc programmes to enable you to develop the skills of an independent researcher. You can follow any of the BSc streams for the first three years and then, provided you are doing well enough, you go on to take the fourth year which involves an advanced course in research skills and an extended laboratory research project.



“ Currently, I am a senior scientist within the Therapeutics group at a biotechnology company which identifies novel therapeutic opportunities from its research solely on human tissue. To be successful in this role, it is imperative to have a broad understanding of a number of scientific areas including physiology, genetics, biochemistry and pharmacology, rather than a specialised but limited scientific background. My basic knowledge in all these areas was established during my degree course, and has provided the foundations for my current career.”

**Dr Rick Davis,**  
Biological Sciences Graduate

## Hanna Tilly

### Biological Sciences 2008 Graduate

"I want to do Medicine so Biological Sciences is a stepping stone to this. I'm also interested in human physiology which is why I have chosen the Physiology with Pharmacology degree stream. The course has a wide range of module selections. Staff in the School are really helpful. There is a careers advisory service that caters specifically for biological sciences students. They run a lot of talks and help you organise work experience and placements during the summer."

"The city of Leicester is the friendliest place I've ever been. It's not too big and intimidating and it's good because it's a multicultural city; international students will feel welcome here."

"I live at home while I study and if other students were to do the same, my advice would be to still get involved. I'm a member of the badminton society and I'm also an Education Representative for Biological Sciences so I attend Student Union Council. It's a good way to get to know other students."

I'd definitely recommend Leicester; it's a great university and very prestigious. Students love it; you can see this from the National Student Survey. It also has one of the best Students' Unions in the country. If you want an all-round university, Leicester is a good choice."





## Biological Sciences (Biochemistry) BSc

### UCAS Code C700 BSc/BSBc

#### Three years full-time or four years with a year in Industry/Europe/USA

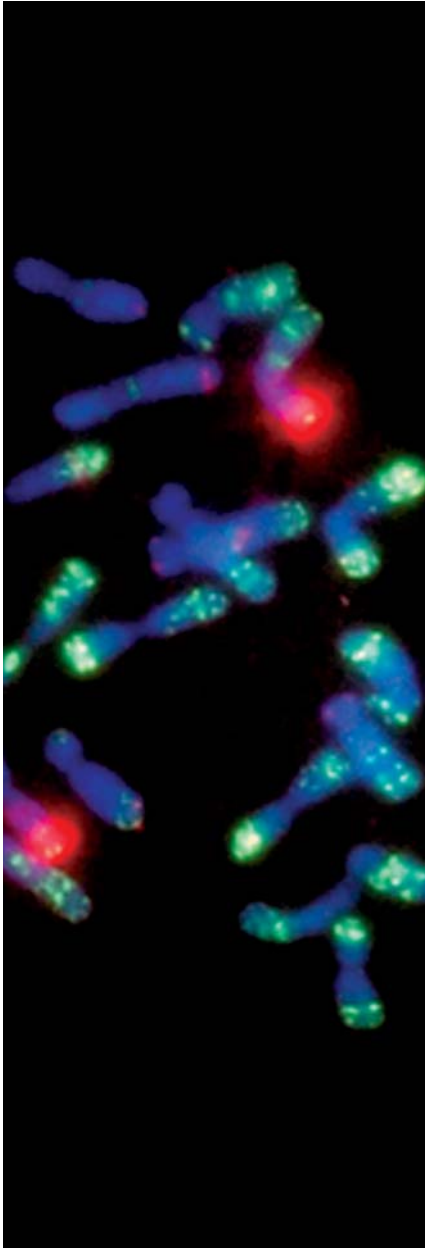
**First year** The Biochemistry course covers the structure and importance of DNA and proteins in a cellular context. Particular emphasis is placed on the structure and mechanism of enzymes. Aspects of bioenergetics and cellular metabolism are also introduced.

**Second year** topics in Biochemistry develop your appreciation of the varied nature of proteins and their functional importance to the behaviour of cells and organisms. You will study the expression of genetic information into the final protein product. With the aid of computer graphics you will explore the relationship between protein structure and function. You will also consider how proteins are organised into complex networks within cells, including the molecular machinery controlling such processes as cell division and movement. You will study in further detail the ways in which food materials are processed both to liberate energy and to generate the building blocks needed for our own bodies.

**Final year** modules include the study of the molecular basis of human cancer. You are offered the opportunity to learn more about techniques used in the study of protein structure and protein complexes and their importance in cells. The methodology of research and an up-to-date understanding of the molecular mechanisms of gene expression constitute another major component of the final year options. You will also undertake a laboratory- or library-based research project on a biochemical topic that interests you, under the supervision of an acknowledged expert in the field.

“Despite the extra pressure I think I enjoyed the third year the most because I got to totally focus on the things that interested me the most, in my case biochemistry, and, since I chose to do a lab-based project, I got some experience of laboratory work which both prepared and encouraged me to study for a PhD because I enjoyed it so much.”

**Claudia Fogl**, 2006 Graduate



## Biological Sciences (Genetics) BSc

### UCAS Code C400 BSc/BSG

#### Three years full-time or four years with a year in Industry/Europe/USA

Genetics is important in many aspects of society including human health, food production, quality of the environment, conservation, ethics and the law. The aim of the Genetics course is to provide a balanced coverage of modern genetics focusing on the organisation, inheritance, expression and evolution of genes in organisms ranging from bacteria to man.

In the **first year** you will learn how genes function and are inherited. In the **second year** you will learn how genomes are organised and investigated. You will gain experience of the range of techniques and approaches that can be used to investigate the role of genes in complex biological situations, such as the development of organisms and the response of organisms to their environment. You will be introduced to the expanding role of genetics in the diagnosis and treatment of disease.

In the **final year** you will have the opportunity to study specialised topics in genetics to an advanced level. These include human genetics, microbial genetics, evolution, the effect of the environment on our genomes and the study of gene function in development. You will also undertake a laboratory- or library-based research project in which you have the opportunity to carry out an in-depth study of a topic in genetics that interests you, under the supervision of an acknowledged expert in the field.

“ I thoroughly enjoyed my time studying at Leicester and would recommend the course to anyone wishing to study biology. The broad basis of teaching in the first year allows you to make an educated choice on what you want to specialise in. I had barely covered Genetics before I came to Leicester, but the first year showed me what I was missing and I was able to choose modules to specialise in the areas I enjoyed most. Also having the wider knowledge of biology from the first year has proved invaluable in trying to get to grips with the more complex aspects of Genetics.”

Jo Purves, 2006 Graduate

## Biological Sciences (Microbiology) BSc

### UCAS Code C500 BSc/BSMb

“The broad scope of study in the first year ensured I covered all aspects the School offered, which allowed me to discover and focus on my strengths in the 2nd and 3rd years. The work was challenging and stimulating and the staff helpful and accessible throughout. I have recommended the Microbiology course to many people and will, without a doubt, continue to do so.”

Krusha Patel, 2008 Graduate

#### Three years full-time or four years with a year in Industry/Europe/USA

The course explains and emphasizes those features that make micro-organisms, including viruses, special and remarkable biological entities. The common **first year** includes an introduction to microbial form and function and consideration of the role of micro-organisms in the biosphere.

For part of your **second year** you will hear about the diversity and flexibility within the microbial world. You will study form, function and habitats of bacteria and eukaryotic micro-organisms; their industrial uses and the diseases they cause. An examination of the variety of structures and mechanisms of replication of viruses plus an introduction to immunology are also part of the second year. A field course held during the Easter vacation gives you the opportunity to visit industrial microbiology laboratories.

During the **final year** you will investigate the complex interactions between pathogens and their hosts, analyse the mechanisms of immunity and the nature of microbial pathogenicity, the molecular approach to vaccine development, the role of viruses in cancer and the biology of AIDS and prion diseases (such as BSE – “mad cow disease”). An environmental microbiology module considers the role of bacteria in terrestrial and aquatic environments, with an analysis of the current views on the origin of life and includes aspects of microbial biogeochemistry, plant/microbe interactions and the microbiology of pollution, waste-management and bioremediation. Other options, such as our module on Industrial Microbiology, consider aspects of microbial molecular biology of relevance to modern biotechnology. You will also undertake a laboratory- or library-based research project in which you have the opportunity to carry out an in-depth study under the supervision of an expert on a specific microbiological topic that interests you.





## Biological Sciences (Physiology with Pharmacology) BSc

### UCAS Code B1B2 BSc/BSPP

#### Three years full-time or four years with a year in Industry/Europe/USA

As part of the common **first year** you will have an introduction to physiological processes occurring in whole tissues and systems with an emphasis on the underlying cellular mechanisms.

The **second year** modules focus on cellular and systems physiology and will introduce you to the concepts underlying pharmacology and the mechanisms of drug action. Cell physiology addresses the properties of non-excitabile and excitable cells including the mechanisms by which cell homeostasis is maintained. There is a strong focus on the organisation and physiology of the nervous system. The systems aspect introduces you to the physiology of the major body systems whilst pharmacology concentrates on the mechanism of action of major classes of drugs acting on these different body systems.

The **final year** modules cover topics from the cellular to the organismal level. Much attention is focused on the communication in the nervous system and on the cellular responses of neurones to chemical messengers and drugs. The visual and auditory systems are used as examples to highlight the principles of central integration along with the mechanisms underlying memory and movement control. There is also a strong emphasis on the cardiovascular system which provides students with a comprehensive understanding of heart function and regulation of blood flow. Comparative physiology taught jointly by physiologists and zoologists examines the different mechanisms by which distinct animal groups have solved basic physiological problems such as locomotion and vision. In your final year you will also undertake a laboratory – or library-based in-depth research project on a specific topic related to physiology that interests you.

“ I specialised in Biological Sciences (Physiology with Pharmacology). I found most of the courses really interesting and the lecturers and other staff are always available and happy to help when you find anything difficult. Leicester is a lively place to study with loads to do.”

**Rachael Quinn,**  
Currently Studying Medicine



## Biological Sciences (Zoology) BSc

### UCAS Code C300 BSc/BSZ

#### Three years full-time or four years with a year in Industry/Europe/USA

The BSc in Biological Sciences (Zoology) at Leicester provides you with a comprehensive understanding of the practical and theoretical approaches that zoologists currently use to tackle some of the fundamental unanswered questions in neurobiology, animal behaviour, ecology and evolutionary biology.

In the **first year** you will study a series of modules that introduce the key elements underpinning animal biology, including details of genetics, cell function, development, behaviour, physiology and evolution.

In the **second year** you will gain further insight into the mechanisms underlying animal behaviour, development and evolution. For example, what strategies do animals use to organise their behaviour so as to maximise reproductive output? What genetic and cellular mechanisms guide the development of a single fertilised egg into a complex adult organism? You will also tackle the complex nature of host-parasite interactions, animal ecology and population biology, and address the theme of biodiversity on a fieldcourse to Mallorca.

Our **final year** courses provide a range of specialised combinations for you to study to an advanced level, including topics such as Comparative Neurobiology, Social Evolution, Molecular Ecology and Applied Ecology. We run popular residential fieldcourses focusing on practical aspects of analysing animal behaviour in the wild. You will be taught by specialists who are researching at the frontiers of their science, so you will be exposed to the latest research ideas and findings. You will learn how to weigh up conflicting evidence and synthesise information from a wide range of sources, and will also have the opportunity to carry out a detailed research project of your own that permits you to address key questions in Biology.

Reading for a degree in Zoology at the University of Leicester will present you with a range of exciting and interesting ideas and challenges, and will provide you with the depth and breadth of training necessary to progress to postgraduate study or to jobs across a broad range of applied biological fields.

“ You cannot help but get caught up in the enthusiasm of the teaching, many of the lecturers are at the forefront of their research field, so in effect you’re being taught by the best. ”

Adam Tozer, 2008 Graduate

## Your Learning Experience

### How will I be assessed?

#### Assessment is based on the following:

- Examinations typically contribute 70% of the marks for each module. In the first year these are usually multiple choice and short answer papers, with the second and third year examinations being predominantly essay-based.
- Coursework: all modules contain some continuous assessment, which typically contributes 30% of the marks awarded for each module. This may include reports of practical work, written assignments, essays and oral presentations.
- Research Project (Final year). An individual research study resulting in the presentation of a dissertation makes up a significant part of the final year.

### How are the courses structured?

#### All of our courses are modular

The academic year is divided into two semesters. One of the benefits of the modular system is that your overall performance is fed back to you at the end of each semester in years one and two. This enables you to closely monitor your progress and, if necessary, adjust your work pattern.

Each module has a credit rating (10 or 20). The credit rating is an indication of the workload required for the module. Each year you must complete 120 credits in order to progress to the next year.

### How will I be taught?

#### Lectures

Lectures form a vital part of University teaching. They are used to define the basic material for a given module. Lecture styles vary

considerably and may include web-based delivery, demonstrations/ animations, as well as the traditional lecture format.

#### Tutorials

In a tutorial a small group of students meets with a member of staff for an hour. The format of tutorials will vary between modules but will involve teamwork. For tutorials students may be required to research a particular topic associated with the module concerned and discuss their findings with other members of their tutorial group, alternatively tutorials may take the form of problem solving sessions.

#### Laboratory classes

Biological Science is, of course, a very practical subject, and so strong emphasis is placed on the acquisition of varied laboratory and field-work skills. During your undergraduate career you will acquire a full range of personal transferable practical, IT, team work and presentation skills. Practical classes take place in well-equipped laboratories, under the guidance of academic staff and postgraduate demonstrators. Laboratory based research projects allow you the opportunity to work in a research laboratory and gain experience of some specialist techniques, for example electron microscopy, NMR, PCR or patch clamping.

### What facilities will be available?

#### IT provision

IT Services provide a networked microcomputer service to students, supplemented by Departmental PC sites, offering applications software, e-mail and access to the Internet and the University Campus Wide Information Service. Student-

access computer suites are used for some formal teaching sessions and are available to students for individual work. Students have access to their own computer file store, with common user interface, application software etc. from any of the 18 Open Access Areas on and off campus.

## Library

The University's award-winning David Wilson Library has an excellent stock of up to date books and receives over 200 periodical titles in Biological Sciences. There is online access to the Library catalogue and to an extensive range of journals available across the campus. Additional copies of texts in demand for taught courses are placed in the short loan collection.

## How will I be supported?

### Personal Tutor

All students are allocated a Personal Tutor who is a member of staff in Biological Sciences. Your tutor receives copies of your continuous assessment feedback forms and you will normally see your personal tutor two or three times a term to discuss progress in your studies, and of course at any other time if you need advice. Your tutor will provide a sympathetic ear for all matters of personal concern, whether they be academic, financial, housing, career, social or personal problems.

### Welfare Services

The University has a professional Welfare Service and the staff are available to assist with a wide range of issues from managing your money to dealing with landlords etc. These will, of course, be treated in the strictest confidence.



### Student Learning Centre

Support for the development of students' independent learning skills is provided by this centre. Students can make use of a year round programme of study workshops, a drop-in advisory centre and a wide range of written study guides.

### Careers Service

Careers staff provide guidance starting in year 1 to all undergraduates on the importance of skills development, work experience and career planning. They offer drop-in careers advice, a well-stocked information room, workshops and practice interviews.

## Entrance Requirements and Further Information

### Biological Sciences – All Degrees:

#### A-Levels

Entry requirements are three A-levels, or two A-levels and a vocational A-level or equivalent, two of which should be in relevant science subjects, preferably from Biology, Chemistry, Physics or Mathematics.

However, for certain courses, other science-based subjects may be acceptable (for example, Geography, Geology or Environmental Science). A pass in GCSE Mathematics and English is also a requirement.

#### Other Qualifications

International or European Baccalaureate, and overseas qualifications are considered. Mature students are welcomed: alternative qualifications e.g. Access courses considered. Direct entry into the second year with suitable advanced qualifications is possible.

#### Typical Offers:

**A-levels:** ABB at A2 (AAB for the M.Biol. Sci).

**Key Skills:** are welcomed in addition and may be included in any offer

**Access:** Pass with 45 credits at level three, depending on the course structure

**National Diploma:** 5 Distinctions

**Irish leaving Certificate:** AABBB, including English, at higher level

**Scottish Highers:** AABBB



**European Baccalaureate:** Pass with 70% overall

**International Baccalaureate:** Pass Diploma with 32-34 points

All applicants to whom an offer has been made are invited to visit the University to meet with academic staff and learn more about our course structure. There are also University Open Days when prospective applicants are welcome to visit and see the campus and departments.

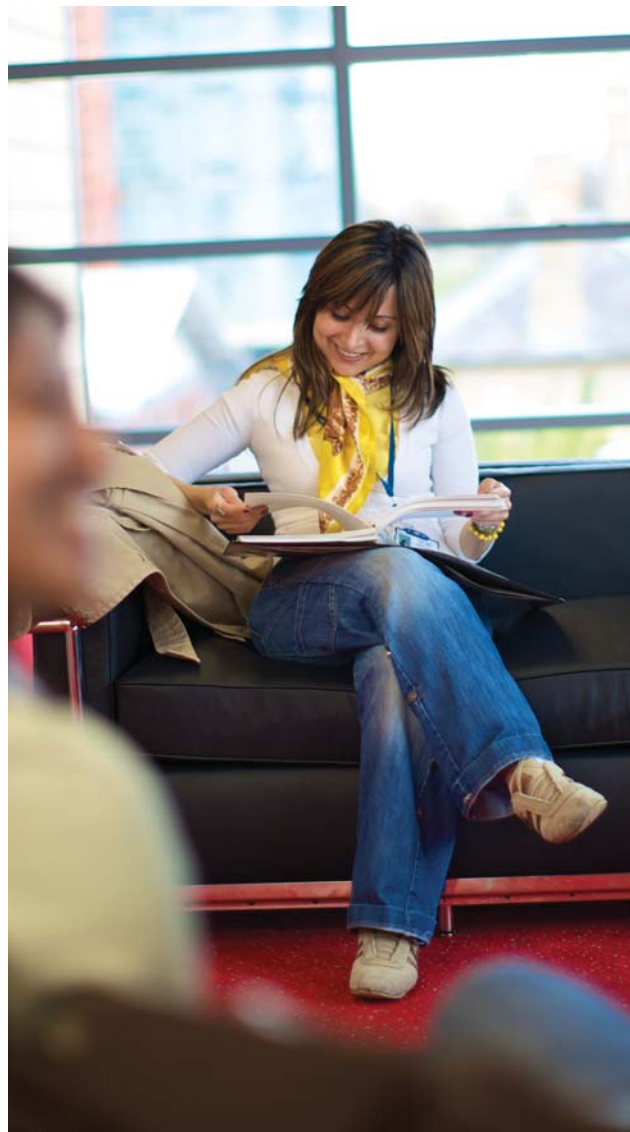


## Your Accommodation

We believe that University of Leicester accommodation provides you with a flexible, enjoyable living experience. Living in University accommodation is the best way to make the most of your time with us. To find out more about our accommodation please see [www.le.ac.uk/accommodation](http://www.le.ac.uk/accommodation)

## Open and Visit Days

We have a number of Open Days during the year to which you are very welcome to attend. Additionally, all applicants to our undergraduate degree course are invited to attend one of our regular Visit Days. Other, individual visits can be made by arrangement. You are very welcome to bring a friend or family member any time you visit the University, and we are always happy to answer any queries on the phone or by email.



## The University and the City of Leicester

### About the City of Leicester

Leicester is a lively diverse city with a huge choice of pubs, clubs, restaurants, cinemas and theatres, including the new Curve Theatre.

Shopping wise, Leicester has all the big shops that you could need. The Highcross Leicester development includes a 12-screen cinema, restaurants, cafés and apartments. Leicester also has many smaller individual shops in 'The Lanes.' where you can pick up unique items.

The New Walk Museum and Art Gallery is one of many museums and art galleries within the city and boasts permanent displays including the Ancient Egyptians and the Dinosaurs, and visiting exhibitions such as a recent Picasso exhibition.

In addition to their usual club nights, most clubs and bars hold student nights with special prices. The University works closely with the clubs in Leicester and there is usually at least one big student night at the clubs each night.

For live music Leicester is excellent. The Venue at the University has recently attracted acts such as Feeder, Pendulum, Scratch Perverts, The Subways, Arctic Monkeys, We Are Scientists and Reverend And The Makers. De Montfort Hall is a bigger venue attracting bigger acts. There is also The Charlotte which is a smaller venue, for about 300 people, where acts like Snow Patrol and Thrice have played.

Leicester has four big festivals throughout the year, which are all great for students. The Summer Sundae Weekender, has included Cold War Kids; Mystery Jets; Macy Gray; Guillemots; Morcheeba; Amy Winehouse; Mr Scruff; Magic Numbers; The Divine Comedy; The Pigeon Detectives and Kate Nash. Leicester also holds an International Music Festival, bringing international jazz and concerts to Leicester. The Caribbean Carnival offers a

mixture of Caribbean music, food and costumes and is a great weekend out. Finally there is the Leicester Comedy Festival. Held in Leicester in February it lasts ten days and has included acts such as Russell Brand.

### About the University

The University of Leicester is a leading UK university with a proud past and an exciting future. We deliver high quality undergraduate, postgraduate and professional education and create research that has impact internationally.

Leicester was ranked joint first among mainstream English universities in the 2005, 2006 and 2007 National Student Surveys for overall student satisfaction.

We are ranked in the UK's top 12 universities by the Good University Guide and 14th in the Guardian University Guide. The research conducted by the University has the strongest impact of any Midlands university and the tenth greatest impact in the UK according to the Guardian. Our students benefit from being taught by staff at the cutting edge of their disciplines and the vibrant and exciting learning atmosphere this creates.

The University Library is a major research library, providing access to over a million printed volumes and a wide range of electronic journals and information resources via the web.

The inspirational David Wilson Library building on the main campus, which opened in April 2008, forms a central part of the University's ambitious development programme. The building, contemporary in design, combines state-of-the-art technology with the strengths of a traditional research library and over 1,500 study places.



“The University of Leicester provides the friendly and supportive environment necessary to develop essential life skills. They are well organised and proficient in using the raw ingredients that are students, to prepare a recipe for success both academically and socially. As a former student I enjoyed my three years at Leicester, and I would thoroughly recommend the University!”

**Onebieni Ana,**  
Currently Studying Medicine

“Going to the University of Leicester has rewarded me with abundant experiences, great friends, a sense of independence, an ambitious ideal and an honours degree to be proud of. I could re-live the experience a thousand times over.”

**Bandana Upadhy,** 2008 Graduate

## For further information please contact

The Admissions Tutor  
School of Biological Sciences  
University of Leicester  
University Road  
Leicester LE1 7RH

t: +44 (0)116 252 3324/2907

e: [bsadmin@le.ac.uk](mailto:bsadmin@le.ac.uk)

w: [www.le.ac.uk/bs](http://www.le.ac.uk/bs)



© University of Leicester 02/09  
Leicester LE1 7RH  
UK

[www.le.ac.uk](http://www.le.ac.uk)

This brochure was  
printed by AVS Print,  
University of Leicester  
using vegetable based inks  
on FSC certified stock

