

Graduates' *review*

Education that Inspires
Research that Changes the World

Inside:

Read about the
Royal Visit in
December 2008

27th June 2009 **Homecoming Event**

Join us for a day of
events and activities
on campus



Welcome...

...to the new edition of the Graduates' Review 2009. I am excited about returning to the University, 30 years after graduation, as the new Director of Development. I am sure like me that you have many happy memories of your time here and are keen to stay in touch with friends and keep up with the latest developments.

There's a lot to catch up on – in a year that saw Leicester win the prestigious accolade of THE University of the Year and HM The Queen accompanied by HRH The Duke of Edinburgh officially open the new David Wilson Library.

There's something for everyone in this issue whether your interest lies in ground-breaking research, booking your place for Homecoming on 27th June or hearing about alumni events and new developments on campus and in the City.

Enjoy the read and let me know your news and views on what we are doing and how we can improve things for you.

Steve O'Connor

Director of Development
email: sjo18@le.ac.uk

© University of Leicester 2009

Feature Articles



Page 4

Royal Visit

Official opening of the David Wilson Library



Page 6

Garden Enigmas

Stemming the decline of bee populations



Page 10

Explosive Forensic Applications

Fingerprinting metals



Page 16

The People's Economist

Economics graduate Professor David Blanchflower



Page 20

Homecoming: 27th June

Our annual event for Alumni, friends and supporters



Page 26

Percy Gee

Major refurbishment & extension of the Students' Union



COVER IMAGE: HM The Queen.

Read about December's Royal Visit when Her Majesty The Queen officially opened the University of Leicester David Wilson Library on the 4th December 2008.

The Team



Steve O'Connor

Director of Development

✉ sjo18@le.ac.uk

☎ 0116 252 2466



Jon Angell

Data Management Officer

✉ jpa2@le.ac.uk

☎ 0116 252 2931



Karl Brown

Alumni Relations Officer

✉ alumni.relations@le.ac.uk

☎ 0116 252 2153



Helen Richardson

Annual Fund Officer

✉ hr15@le.ac.uk

☎ 0116 252 2354



Kathryn Whitehurst

Major Gifts, Legacies

and Bequests Officer

✉ kw42@le.ac.uk

☎ 0116 252 2195



Rosemary Faint

Development Assistant

✉ rlf9@le.ac.uk

☎ 0116 252 2418

Contact: Development and Alumni Relations, University of Leicester, University Road, Leicester LE1 7RH. Email: alumni.relations@le.ac.uk

Join us on [facebook](#) University of Leicester Alumni Association [Linked in](#) University of Leicester Alumni.

Visit the Alumni Relations Website @ www.le.ac.uk/alumni for the latest alumni news, events, 2009 Personalia and obituary notices.

'Elite without being elitist'

Introduction by Professor Robert Burgess, Vice-Chancellor

As many alumni will know, the last year has been momentous for the University in many ways but none more so than when we officially marked the 50th Anniversary of the granting of the Royal Charter by hosting a historic visit by HM The Queen accompanied by HRH Prince Phillip to open the David Wilson Library and celebrated winning the highly respected Times Higher Education University of the Year award.

As part of our 50th Anniversary celebrations I was delighted to welcome over 6,000 graduates and friends to the University campus for the highly successful 'Celebrate Leicester Day'. It was a splendid opportunity to meet so many alumni and supporters who were keen to learn about our important work and to visit our new facilities, including the David Wilson Library which was open for viewing. The official opening of the Library by HM The Queen and HRH the Duke of Edinburgh was a special moment in the University's history and I am sure you will enjoy reading about their visit in this issue.

Our RIBA award-winning Library has been our biggest building project ever (at a cost of £32 million) and could not have been achieved without the magnificent fundraising support of our principal sponsors, long-standing friends of the University and alumni, many of whom are listed on pages 30 and 31. I have written to thank all our donors personally but I would also like to take this opportunity to thank you again for your generous support without which the University would not continue to grow and flourish.

I am pleased to say that the major improvement of the campus continues with the unveiling of our ambitious £1 billion Development Plan, the biggest ever undertaken in the university sector. This currently includes the £15 million

transformation of the Percy Gee Building which is remembered fondly by many graduates. This development aims to develop one of the best Students' Union facilities in the UK and alumni will have the opportunity to view displays in the Percy Gee Building, take part in a specially staged debate in the Queen's Hall and a planned auction in the Redfearn Bar as part of our popular Homecoming event on 27th June 2009. Full details and booking information for the Homecoming can be found in the enclosed flyer, or online at www.le.ac.uk/alumni.

I know alumni put great store by the growing reputation of the University and our success in league tables has been significant – rising to our highest ever position. We also continue to receive accolades for our teaching quality and the National Student Survey 2008 – the country's largest and most comprehensive test of student opinion, conducted independently of institutions – which revealed that 92% of Leicester's full-time students were satisfied with their experience. This endorsement was bettered only by Cambridge amongst mainstream universities in England. Our outstanding work was further recognised in 2009 by The Higher Education Funding Council (HEFCE) when we received the news that Leicester's research funding would rise by over twice the national average – confirming the University's status in world-leading research. In this edition of the Graduates' Review you can read how our research has led to new scientific discoveries.

Our alumni community is fundamentally important to our future prosperity and as you read this magazine I hope you will continue to feel great pride in your University which, with over 21,000 students may be very different to the Leicester you knew, but retains the values



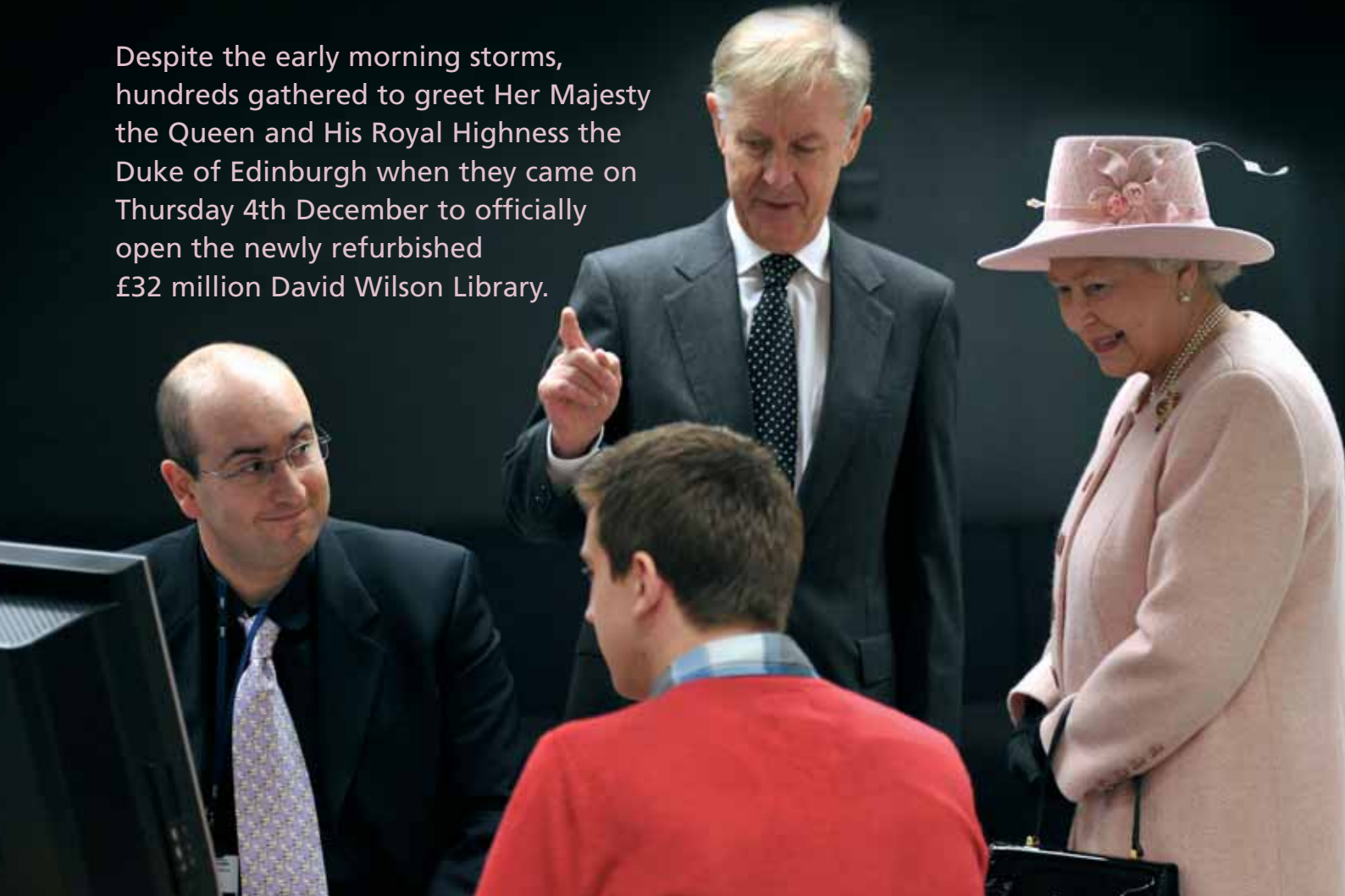
"The official opening of the Library in December by HM The Queen and HRH the Duke of Edinburgh was a special moment in the University's history and I am sure you will enjoy reading about their visit."

and commitment to inspirational teaching and world-changing research. In winning the coveted award of University of the Year we were described as 'elite without being elitist' and I believe that with this ringing endorsement we are poised for even greater success in the future. ■

2008/9
THE AWARDS
UNIVERSITY OF THE YEAR

ROYAL VISIT

Despite the early morning storms, hundreds gathered to greet Her Majesty the Queen and His Royal Highness the Duke of Edinburgh when they came on Thursday 4th December to officially open the newly refurbished £32 million David Wilson Library.



2

3

1

Mr Wilson, principal sponsor of the Library said, "We are very proud this morning, this is a fantastic occasion. The Library has had a lot of planning and the whole project has exceeded everybody's expectations and the University should be very proud of everything that has been achieved."

The Queen and the Duke met with staff, students, senior officers of the University and donors, including David Wilson. They were given a tour of the library, which recently won the 2008 RIBA East Midlands Award for Architecture and the 2008 Building of the Year prize at the Property and Construction Awards. They were also treated to a special lunch on campus.

As part of her tour, Her Majesty viewed an exhibition of her previous visit in May 1958, shortly after the University had received its Royal Charter, when she opened the Percy Gee Building which is now home to the Students' Union.

Sir Peter Williams, Chancellor of the University said "The Queen was fascinated by the development in the University... and I saw, when I introduced her to the record of her visit 50 years ago, how much the memory of that meant to her."

Two guests at the 2008 Royal visit had also been present in 1958 and were able to exchange memories with the Queen.

Dr Wendy Hickling OBE, JP, DL (née Baldwin), the first graduate of the University, Honorary Graduate and Distinguished Honorary Fellow commented: "Meeting the Queen again was just as thrilling as the first time. I tried to get across what a happy place it was, and is, to be in... It is a happy place to study and I think this came across."

Like Dr Hickling, Mrs Jean Humphreys, Honorary Graduate, Distinguished Honorary Fellow of the University, and wife of the late Professor of English Arthur Humphreys, has long been an enthusiastic supporter of the University. She said: "Of course the first time I met her, in 1958, I just shook her hand and she moved down the line, but this time I had a word with her."

The project would not have been possible without the tremendously generous support of alumni and others close to the University. Graduates donated over £120,000 to the development project through the Annual Fund telephone fundraising campaign alone, and a number of graduates made significant personal or corporate donations to the project.

There is no doubt that everyone who supported the building of this invaluable asset will feel an immense sense of pride in the result, which received 144,000 visits in November 2008 alone – a true testament to the success of its design and its importance to the University. ■



1. Her Majesty with Chancellor Sir Peter Williams
2. Hundreds of people, including schoolchildren, gathered for the historic occasion
3. Her Majesty with Chancellor Sir Peter Williams and Vice-Chancellor Professor Robert Burgess
4. Third year computer science student John Pickereys converses with Her Majesty
5. Distinguished Honorary Fellows Jean Humphreys (left) and Wendy Hickling converse with Her Majesty and Sir Peter Williams
6. Her Majesty with principal sponsor David Wilson and Mrs Laura Wilson

Scientists Unlock GARDEN ENIGMAS

Concern over the dramatic fall of bee populations has led to scientists, conservationists and agencies working to determine the causes in the hope of finding ways to stem the decline.



Biologists at the University of Leicester are at the vanguard of research aiming to understand bee behaviour in collecting nectar from flowers. Researchers are also investigating the science behind the production of flowering plants.

The findings have implications for the health and survival of bumble-bee colonies – as well as for seed production of flowering plants. The breakthrough research published in prestigious scientific journals provides insights into flora and fauna that had previously been poorly understood.

Understanding the process of fertilisation in flowering plants is critical because it provides greater understanding of the processes involved in seed production. It is also beneficial in understanding the evolutionary origins of flowering plant reproduction and may be used by plant breeders to control crossing behaviour in crop plants.

In the future such information may become increasingly important as we strive to breed superior crops that maintain yield in a changing climate.

In one study, an enigma – unique to flowering plants – was solved by researchers from the University of Leicester and POSTECH, South Korea. Scientists already knew that flowering plants, unlike animals require not one, but two sperm cells for successful fertilisation. This 'double fertilisation' is essential for fertility and seed production in flowering plants so increased understanding of the process is crucial.

The mystery of this 'double fertilization' process was how each single pollen grain could produce 'twin' sperm cells – one to join with the egg cell to produce the embryo, and the

other to join with a second cell in the ovary to produce the endosperm, a nutrient-rich tissue, inside the seed.

Professor David Twell, of the Department of Biology at the University of Leicester and Professor Hong Gil Nam of POSTECH, South Korea reported the discovery of a gene that has a critical role in allowing precursor reproductive cells to divide to form twin sperm cells.

Professor Twell (pictured left) said: "This discovery is a significant step forward in uncovering the mysteries of flowering plant reproduction. Given that flowering plants dominate the vegetation of our planet and that we are bound to them for our survival, it is heartening that we are one step closer to understanding their reproductive secrets."

Another Leicester team of biologists, working with geneticists from the University made an important advance in understanding bee behaviour towards flowering plants. They found bumble-bees go 'off colour' and can't remember which flowers have the most nectar when they are feeling under the weather.

Bees were divided into a control group and a group that were injected with lipopolysaccharide, a substance that stimulated an immune response without a need for the bee to be infected with a disease. Bees were offered the choice of blue and yellow artificial flowers, only one type of which contained sugar water. An individual's flight was recorded over ninety visits to these flowers. Eventually the bees spent almost all of their time going to the rewarding flowers, but it took the immune stimulated bees longer to reach this point.



Lecturer in Animal Biology at the University of Leicester, Dr. Eamonn Mallon, said: "This work has two important applications. Firstly, there is a lot of interest in the connections between the immune system and the nervous system in human biology. The Mallon lab was the first to show that these interactions also exist in the much more experimentally tractable insects."

"Secondly, there is concern about both the decline in wild bumble-bee species and the effects of disease on the honeybee industry. It has been shown that learning is vitally important to how well a colony prospers. This effect of immunity on learning highlights a previously unconsidered effect of disease on colony success."

Another study involving Leicester and Queen Mary, University of London found bumble-bee colonies which are fast learners are also better able to fight off infection.

Like humans, bees' ability to learn appears reduced when they are ill. The prediction was that good learners would be worse at fighting infections – but surprisingly, this was not the case. The team reported a positive relationship between a bumble-bee colony's learning performance and their immune response. ■

2008/9 THE AWARDS UNIVERSITY OF THE YEAR

The University of Leicester has proudly claimed the title of 'University of the Year' in the higher education sector's most prestigious and keenly contested awards.

"Leicester was able to evidence its commitment to high quality, a belief in the synergy of teaching and research and a conviction that higher education is a power for good. The stand-out choice in a very tough competition."

In recognising Leicester's tremendous achievements, The Times Higher cited the view that Leicester was elite without being elitist.

Ann Mroz, Editor, Times Higher Education, commented: "Few entrants embody the spirit of these awards more than the University of Leicester. Its triumph in this category at the third time of entering sends out a powerful message to the rest of the sector on the nature of constantly striving for excellence. Leicester's turnaround in the last decade has been extraordinary, and it is encouraging to note that the University has risen through the league tables without feeling the need to compromise on its widening participation initiatives."

Judges stated: "Its continued commitment to, and real success in, widening access to students from non-traditional groups made it the stand-out choice in a very tough competition. On access Leicester is unique among its research intensive peers – it exceeds its benchmark for widening participation."

This is the fourth successive year that Leicester has been in the running for a title of University of the Year, having been cited three times previously by The Times Higher and once by the Sunday Times.

Vice-Chancellor Professor Burgess said: "This tremendous success represents another major milestone in the achievements of the University of Leicester which has gone from strength to strength over the past decade.

"We now stand at the highest point in league table rankings in all national media and are placed second only to Cambridge for student satisfaction amongst full-time students taught at mainstream universities in England.

"We have also achieved our highest rankings in The Times Higher and Shanghai Jiao Tong University world ranking of universities.

"None of this could have been possible without the hard work of colleagues and students at the university." ■



Leicester...

But Not As You Knew It...

Leicester, one of England's oldest cities, is undergoing a dramatic, 5-year, £3 billion facelift which is set to place it firmly on the lifestyle map.

Among the many significant developments that make up this ambitious project is *Highcross Leicester*, a new £350 million retail and leisure development which has been designed to incorporate both indoor and outdoor spaces.

The eye-catching cornerstone of Highcross – the flagship John Lewis store (1) has already become a landmark in its own right. As well as this stunning store, the new retail centre also incorporates 120 shopping outlets, 22 restaurants and a Showcase cinema, all ideally located right in the heart of the city centre.

Those of you with a taste for performance will enjoy a visit to another of Leicester's exciting newest arrivals – the state-of-the-art *Curve* theatre (top). This fantastic new development replaces the Haymarket Theatre and is set to become a world-class venue. Opened in November, it sports a glass façade that is easily as dramatic as the performances that take place inside. It is even possible to see the stage from the street when the 32 tonne steel separating walls are lifted.

Leicester's cultural scene will be further enhanced by the £21.5 million development of *Phoenix Square* (2), a unique combination of the arts, workspace and architect-designed homes, which will feature three cinema screens, a digital exhibition space and digital production facilities.

Another sign of Leicester's regeneration, *Hotel Maiyango* (3), the city's first boutique hotel opened recently. The hotel marks a turning point for city, showing that a new era has begun. With contemporary rooms, luxury suites, a rooftop terrace and a highly-acclaimed restaurant, this is going to prove to be *the* place to be.

Hotel Maiyango was created and developed by University of Leicester graduate Aatin Anadkat (BA Economics and Law, 2003), who says: "Leicester has transformed dramatically in what seems like a very short space of time. There is a real energy and buzz about the place which has been lacking in recent years. It seems everyone is working together to put Leicester firmly on the map and make the city into a real destination. It's a very exciting place to be right now."



John Lewis © Page 1 Photography
Curve © Creativity Works Photography

The Homecoming event on June 27th, gives you the perfect opportunity to revisit the campus and the city. See page 20 or visit www.le.ac.uk/alumni for more details. ■

Novel Technique has **Explosive Forensic Applications**

A state-of-the-art technique developed by a research fellow at the University of Leicester has been hailed as one of the top 50 inventions of 2008.

The technique to visualise fingerprints on metal has been developed by Dr John Bond, Scientific Support Manager at Northamptonshire Police and Honorary Research Fellow at the University's Forensic Research Centre.

Time Magazine listed Dr Bond's research as one of the greatest inventions of the year. The citation in Time states: "English physicist John Bond developed a technique for analyzing fingerprints on a gun after it's been wiped clean. Sweat corrodes metal, so Bond applied an electrical charge and a fine carbon powder to a gun's corroded part, revealing a fingerprint pattern. Police are already using the four-month-old technology to reopen some cases."

Dr Bond is now working with the University's Department of Chemistry to examine as well as take this novel research further. The collaboration with Leicester will aim to come up with different variants of the methodology to achieve the same operational goal.

Professor Rob Hillman, Dean of Science and Professor of Chemistry said: "It is very satisfying to see excellent fundamental science being applied to a practical problem. We are delighted to have the opportunity to collaborate with Dr. Bond and his colleagues and we look forward to some very exciting chemistry and its application to forensic science."

Dr Bond's technique can even be used on bombs. He has been approached by military personnel in Afghanistan to discuss potential use of the technique. It would mean recovered fragments of bombs could be tested for prints put on it while it was manufactured.

Dr Bond said: "We have developed a method that enables us to 'visualise fingerprints' even after the print itself has been removed. We conducted a study into the way fingerprints can corrode metal surfaces. The technique can enhance – after firing – a fingerprint deposited on a small calibre metal cartridge case before it was fired."

"For the first time we can get prints from people who handled a cartridge before it was fired. Wiping it down, washing it in

hot soapy water makes no difference – and the heat of the shot helps the process we use.

"The procedure works by applying an electric charge to a metal – say a gun or bullet – which has been coated in a fine conducting powder, similar to that used in photocopiers.

"Even if the fingerprint has been washed off, it leaves a slight corrosion on the metal and this attracts the powder when the charge is applied, so showing up a residual fingerprint.

"The technique works on everything from bullet casings to machine guns. Even if heat vaporises normal clues, police will be able to prove who handled a particular gun." Dr Bond said they had found the method worked well on certain metals including brass which is often used for bullet casings.

Detectives from the US are working with Dr Bond on a number of unsolved murder cases to investigate whether his technique has the potential to resolve cases.

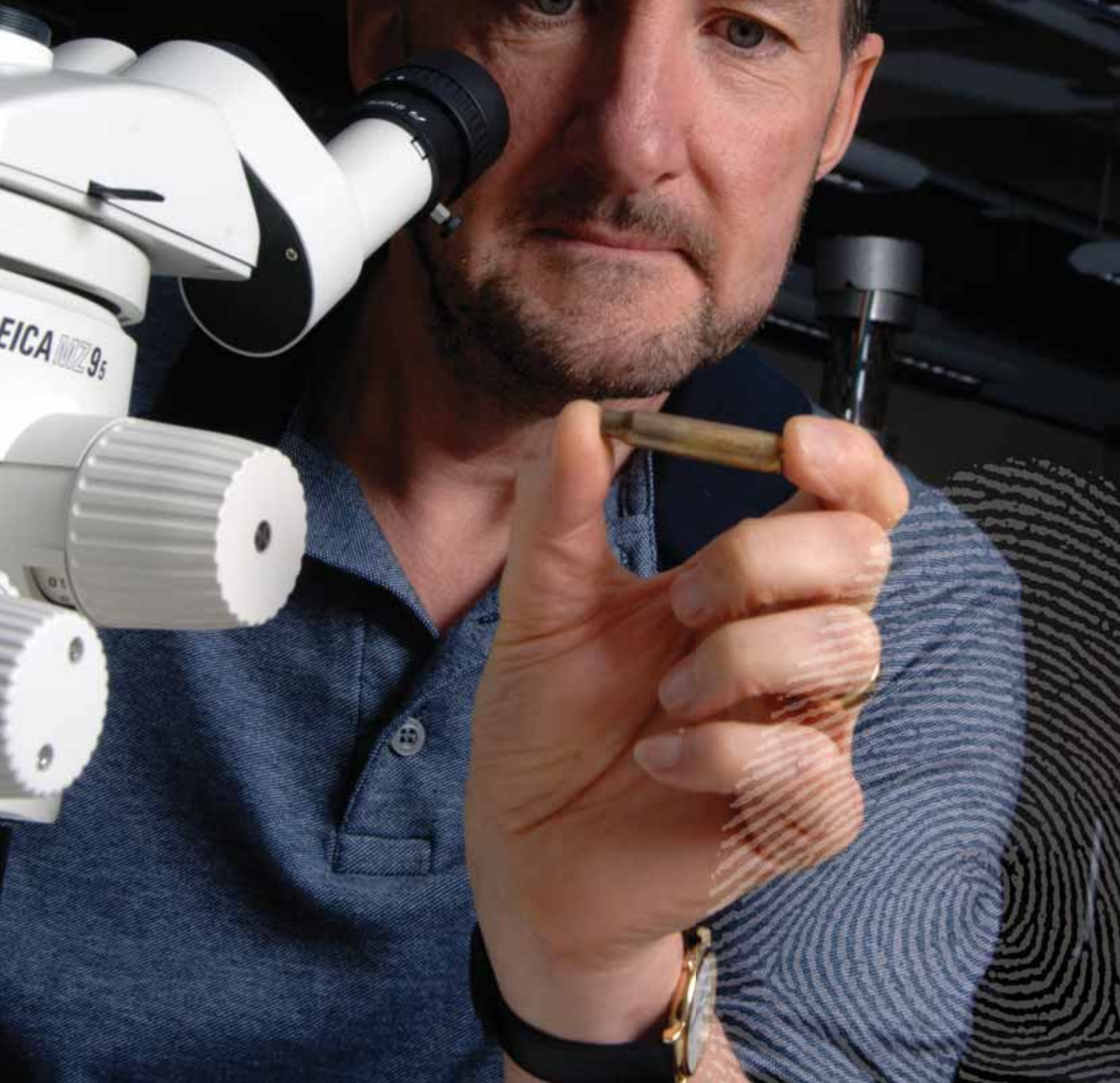
Dr Bond is optimistic that it will not be too long before someone is charged as a result of the fingerprints he has found for numerous US police forces. "We have already been in discussion with a US District Attorney who has explained to us the process we will need to go through to get this new technique accepted in the US Courts. We look forward to achieving this and it will be a significant milestone for us", said Dr Bond.

Police forces in the UK have been somewhat slower to take up Dr Bond's offer of examining old cases but the momentum is increasing and a number of high profile old cases have been referred to Dr Bond.

Dr Bond will give the Keynote Lecture, based on this research during the Homecoming event on June 27th 2009. See page 20 or visit www.le.ac.uk/alumni ■



"For the first time we can get prints from people who handled a cartridge before it was fired. Wiping it down, washing it in hot soapy water makes no difference – and the heat of the shot helps the process we use."



LEICESTER'S AMBITION TAKES

Recent graduates returning to the University of Leicester often remark on the pace of development on campus – how new buildings have sprung up and old ones have been transformed as a result of refurbishment programmes.

The £32 million David Wilson Library epitomises this metamorphosis on campus – former students will barely recognise what has emerged from the vestiges of the former 70s black glass-fronted building. Through the generous support of David Wilson and many other like-minded donors who believed wholeheartedly in the project, we have been able to turn the vision for a state-of-the-art library into reality. Many graduates also helped in the fundraising and contributed generously as part of the Annual Fund appeal which has raised over £120,000 in vital funds for this flagship project.

It is a sign of the times – and the shape of things to come. The Library symbolises Leicester's ambition and confidence – it is a double award-winning stunning new purpose-built facility for academic and research advancement. This transformation of the University's landscape is set to continue apace with the announcement of a £1 billion development programme which will allow the capacity of the campus to increase by a million square feet and enable the full-time undergraduate student community to grow by 50% from over 20,000 to 25,000.

An architectural model of a campus development, featuring several interconnected rectangular buildings in shades of blue and white, set against a dark blue background with some greenery.

*Architect's model showing
proposed developments on campus*

"The campus is like a small city within a larger city, and the University should aspire to create spaces like those which exist in the best cities, which draw people in and encourage them to stay and meet others."

SHAPE

The strategy that underpins the University's Development Framework Plan will help Leicester move into the top 10 universities in Britain – it is currently ranked 12th in the UK.

Leicester Vice-Chancellor Professor Bob Burgess said: "Once complete, this development will establish the University of Leicester in a commanding position that will set an example for other top universities to follow. We intend to show that it is possible to be an elite institution without being elitist – something that no other high ranking research-led university has achieved so far."

Key to Leicester's plan is to develop a campus that augments its strengths, provides scope for new ventures and developments and creates a 'sense of place' – a campus that staff and students find memorable as well as beneficial. The aim is to develop a first-class estate befitting a first-class university.

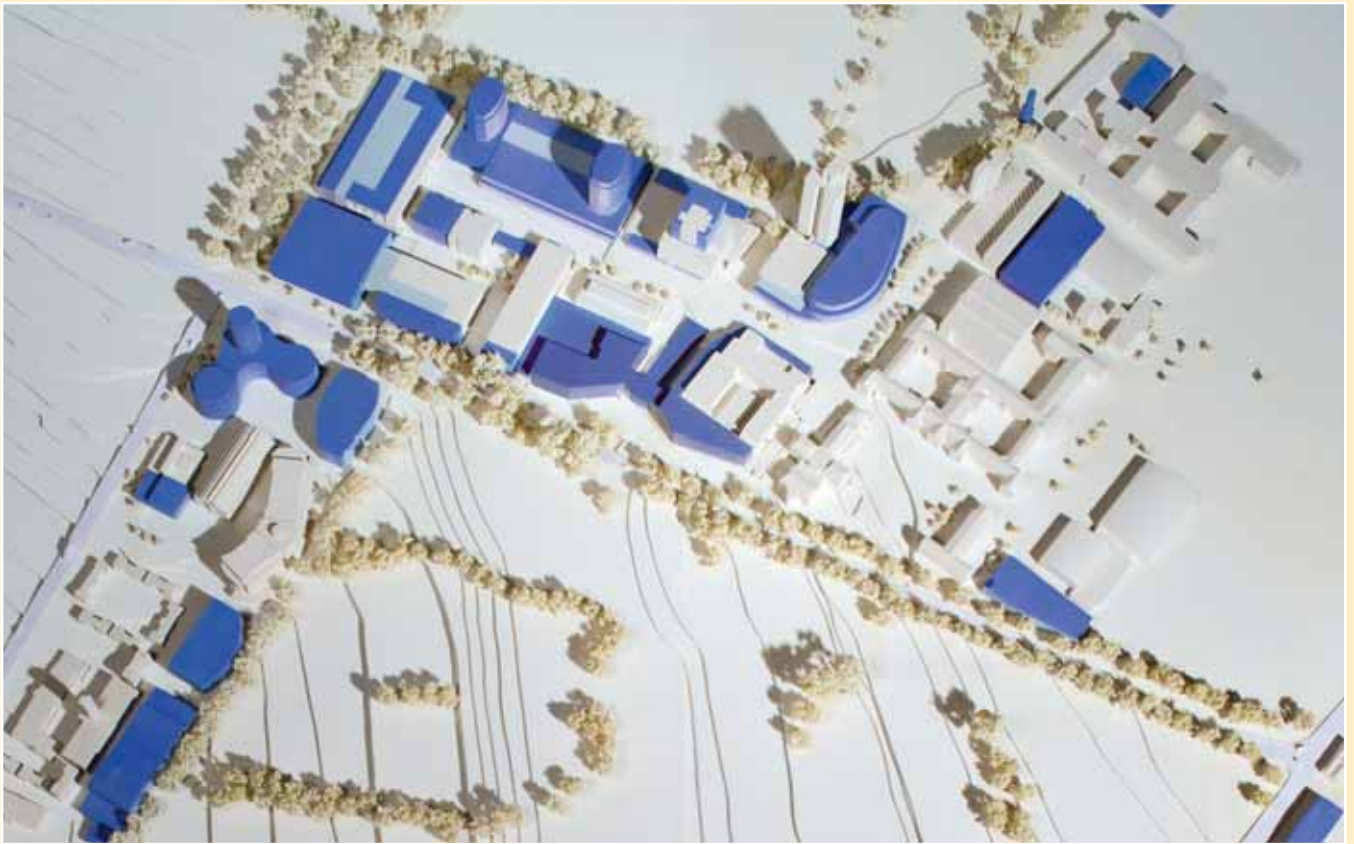
Along with an academic mission that seeks to exploit the synergy between research and teaching, Leicester aims to create new work and social spaces to facilitate inter-disciplinary and networking opportunities.

This plan is all the more remarkable in the current climate of global financial crisis – but Leicester is convinced that it must continue to invest in order to maintain its position and increase its success, as well as continuing to contribute to regional and national prosperity, including the creation of several hundred jobs over the next 20 years.

Central to achieving our ambitions will be the continued generous support of alumni worldwide, corporate partners, trusts and foundations and individual benefactors who believe in Higher Education and that students deserve a world-class estate to match the proven quality of our teaching and research.



Architect's impression of the central campus (Shepherd Epstein Hunter, September 2008)



Architect's model showing proposed developments on campus (Architect Shepheard Epstein Hunter, Photography Peter Durant). Blue sections indicate new buildings or modifications to existing buildings as proposed in the development plan.

The Vice-Chancellor added: "This visionary plan is in keeping with Leicester's ambition to rank amongst Britain's best universities. In a global education marketplace, it is essential that the physical attributes of the University reflect its world-class research and teaching. We are planning for decades ahead – what will take shape at Leicester will speak volumes for the kind of institution we are and our ambition to continue to be one of the best."

The new £786m Development Framework Plan prepared by Shepheard Epstein Hunter builds on a £300m campus plan announced by the University in 2002.

At the heart of the strategy is the creation of high quality landscaped public spaces between buildings, with car parking and deliveries removed from view as far as possible, and publicly accessible buildings set around four new pedestrian squares.

Leicester plans to:

- Increase its capacity by a million square feet – from 198,000 sq m to 298,000 sq m
- Provide increased capacity to increase full-time undergraduate student numbers by 50%, from over 20,000 to 25,000
- Provide support for 24-hour campus facilities
- Take account of environmental responsibilities through sympathetic estate design
- Redevelop the Students' Union at the centre of the campus
- Provide a platform for arts activities and social facilities in the heart of the campus

Director of Estates, Paul Goffin, said: "First impressions are extremely important. It has been said that prospective students form a firm opinion about a university within their

“The University of Leicester has a well deserved reputation for academic excellence in research and teaching. The University can also be proud of its achievements in widening participation in higher education, efforts which have now been nationally recognised.”

Sir Peter Soulsby
MP Leicester South

first 15 minutes of arrival at an Open Day. No university can afford to be complacent about its ability to attract students.”

Paul Goffin continues: “This visionary plan will create a campus that sells itself to staff and students. When one thinks of major public institutions, the quality of how well they are remembered is dependent to a large extent on how much of a sense of place they have. Memorable public spaces and buildings will speak volumes for the University.

“The University’s academic achievements are, of course, hugely powerful in shaping its identity or brand – but it will also be remembered by all who deal with it as a place. The more positive the experiences of this ‘sense of place’ can be, the more memorable the University of Leicester is, delivering benefits in terms of competitiveness, student and staff attraction and retention and general reputation.

“The campus is like a small city within a larger city, and the University should aspire to create spaces like those which exist in the best cities, which draw people in and encourage them to stay and meet others.”

Leicester South MP Sir Peter Soulsby, himself a graduate of the University, commented:

“I am pleased to endorse the University’s new Development Framework Plan which sets out proposals for radical improvements and changes to the University campus. These improvements to the University estate will ensure the quality of the facilities match the very high standards of research and teaching. I am proud to be able to say that the University of Leicester is part of my constituency, and I am pleased to be working with them at this exciting time in their development.” ■

INSPIRING BUILDINGS AND SPACES



1



2



3

1. The newly refurbished David Wilson Library
2. The Henry Wellcome Building which was completed in 2005
3. A unique space in the David Wilson Library
Pictures 1 & 3 by Martine Hamilton-Knight

THE PEOPLE'S *Economist*

One day in 2006, casually looking at the news service run by Dartmouth College, New Hampshire, where he is the Bruce V Rauner Professor of Economics, Leicester graduate and Honorary Graduate Professor David ('Danny') Blanchflower discovered that he was being considered for membership of the Bank of England's Monetary Policy Committee.



Two weeks later he received a phone call offering him the post and he has been commuting monthly from the US to Britain ever since as one of the nine economists who set UK interest rates with the aim of controlling inflation.

Known as the 'dove' of the MPC, he has voted against interest rate rises more often than his colleagues, sometimes as a lone voice on the Committee from which he has just stepped down after serving his term of office. He feels he has been vindicated. "In September I was alone in voting for 50 base point cuts. Then, three weeks later, everyone else came round to it."

He added: "It's an incredible job for an economist. Being in the midst of this unbelievable financial crisis as a policy maker is both exciting and humbling. All the training you've had comes to bear. It's not just advisory, you have to make decisions every month while the country watches you, and I take that very seriously."

He has been advisor on numerous international bodies on labour economics, including the International Labour Organization and the Organisation for Economic Co-operation and Development. Other current academic posts include; Research Fellow, at the Centre for Economic Studies, University of

"The essence of my work is that I've always cared about the 'man on the Clapham omnibus'," he said. "I don't believe in sitting in an ivory tower creating little models. My work is grounded in the world and its people."



Bank of England, London

Munich and The Institute for the Study of Labor (IZA) at the University of Bonn; and part-time Professor at the University of Stirling, Scotland.

A labour economist, Danny has always been interested in applied research, which he feels is key to interpreting economic data. "I learned that first at Leicester," he said, "and I've been doing applied economics ever since."

He graduated from Leicester with a BA in Economics in 1973 and taught for some years, before deciding he wanted to be an academic. A Masters from the University of Wales, a PhD from the University of London, and a couple of years' work as a researcher and lecturer in labour economics preceded a move to the US with his young family in 1989.

"Interest rates rose and my salary was only just covering my mortgage," he said. "So I either had to give up being an academic in Britain or go on the world market. I had a good offer to come to Dartmouth College, which is one of the great Ivy League universities, and it turned out to be a wonderful place to work and bring up a family."

A second inducement turned out to be the National Bureau of Economic Research (NBER) in Cambridge, Massachusetts. "Being a Research Associate there is a big deal for an economist," he said. "What I like especially is the emphasis in the US on applied empirical research. The NBER is a place which is interested in policy, and I learned a lot that is relevant to my work on the Monetary Policy Committee."

Danny is widely published on wage determination, youth labour markets, entrepreneurship and – more surprisingly – the economics of happiness and its relationship with age, employment, health, marriage and, critically, relative values. Relative values also lie at the heart of his study on obesity as a 'social epidemic'.



Professor Robert Burgess meets David Blanchflower at the Bank of England Museum

His book, *The Wage Curve*, co-written with Andrew Oswald, won Princeton University's Richard A Lester Prize, for the revelation that the relationship between wages and unemployment has a 'negative slope' – that wages are highest when unemployment is lowest, while increased unemployment drives down wages.

"The essence of my work is that I've always cared about the 'man on the Clapham omnibus'," he said. "I don't believe in sitting in an ivory tower creating little models. My work is grounded in the world and its people."

"Old and new friends are welcome." said Professor Blanchflower as he hosted an enjoyable reception at the Bank of England Museum on Wednesday January 28th 2009. ■

For more information regarding the London reception, see page 18.

Alumni Events

To find out more about the University or the stories listed here, log on to www.le.ac.uk/alumni



London Reception

On Wednesday January 28th 2009, over 100 graduates and guests came together to take part in a special reception which was hosted by fellow alumnus Professor David Blanchflower (see page 16) in the stimulating surroundings of the Bank of England Museum in London.

During the reception, Professor Blanchflower addressed the guests, commenting on the role of the Monetary Policy Committee, and also spoke of the time he spent as a student at the University between 1970 and 1973. One of his key recollections was of attending a packed-out Led Zeppelin concert in the Queen's Hall at the Students' Union.

Graduates were able to take in the fascinating exhibition of the Bank's rare collections, including the opportunity to lift an actual bar of gold!



Celebrate Leicester Day

April 26th 2008 was 'Celebrate Leicester Day', a public celebration on campus and one of the highpoints of the University's 50th Anniversary celebratory year.

Over 6,000 graduates and members of the public visited the University throughout the day, taking part in a vast array of lectures, seminars and hands-on activities including:

- Using powerful microscopes to study fossils
- Getting a full-body MOT
- Making ice-cream with liquid nitrogen
- Solving crimes using mathematics
- The search for extra-terrestrial life
- Viking re-enactments.



Alumni Association Annual Public Lecture

'Leadership in Public Life' by Mr Tarique Ghaffur, CBE, QPM

An urgent call to action for Muslim leaders to set up community panels to 'debrief' people with 'warped views of Islam' was made by Tarique Ghaffur, former Assistant Commissioner of the Metropolitan Police, during the lecture at the University of Leicester on Wednesday March 18th 2009.

The lecture attended by an engaged audience of over 200 people reflected his personal thoughts based on 34 years in the police service and various leadership positions within Manchester, Leicestershire, Lancashire and, most recently, the Metropolitan Police, where he became the highest ranking Asian and Muslim police officer in the UK.

Mr Ghaffur, an Honorary Graduate of the University of Leicester, summarised the leadership challenges and dilemmas police services currently face, including serious and organised crime, terrorism and the inadequate representation of minority communities within senior ranks.

Drawn from his long career in public service, Mr Ghaffur called for:

- A gagging order on extremists appearing on mainstream television channels and in public gatherings where they go about spreading hatred
- An ombudsman to oversee senior appointments within the police service
- Reduction in managerialism and politicisation of policing

Mr Ghaffur also took the opportunity to talk about his Community Safety Foundation, set up to promote shared responsibility for security and safety amongst vulnerable communities in the UK.



Travel Programme

The University of Leicester, in co-operation with alumni travel specialists IMA Travel, is delighted to be able to offer you a diverse range of trips to exciting destinations including Galapagos (in a very special anniversary year, celebrating 200 years since Darwin's birth) and an exploration of the wines, wildlife and wildflowers of South Africa's Cape of Good Hope.

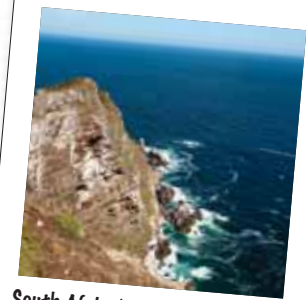
These and other specially-designed tours and cruises offer you the chance to explore fascinating destinations with expert academic guides in the company of like-minded graduates.

Join a growing number of graduates who are taking advantage of this exceptional opportunity:

"Just to say how enormously I enjoyed the Galapagos trip with IMA – it was marvellous in every way and a wonderful memory for life"

"We had a fantastic time and were very impressed by the organisation so that all went smoothly. We really appreciate the attention to detail of the holiday...and of the quality of the accommodation at every stage."

For details of upcoming tours, please visit www.imatravel.com/leicester



South Africa's Cape of Good Hope



Galapagos Islands

HOMECOMING June 27th 2009



Homecoming, our popular annual event for graduates, friends and supporters takes place this year on June 27th and is shaping up to be a great one. One of the key highlights of the day will be the Percy Gee Students' Union Building, which is soon to undergo a major renovation.

This annual event gives you a perfect opportunity, to reminisce, to reunite with friends and to relive your student days.

You will also have the opportunity to hear from leading Leicester academics, including Honorary Research Fellow Dr John Bond, whose research into metal corrosion has led to a technique with the potential to solve numerous past and future crimes. Also, Professor Andy Grescher will illustrate the ways in which your diet can help to prevent cancer.

A major attraction during the day will be the opportunity to see the Percy Gee Building (Students' Union) for the last time before it is remodelled, with the opportunity of taking

a 'hard-hat' tour through the building. Plans of the project will be on display, and project leaders will explain how the transformation will establish Leicester as the Union of choice for aspiring students.

You will also be able to count yourself among the last people to drink in the legendary Redfearn bar, as Homecoming sees it call last orders for the **very last time!**

You will even be able to bid to take home a piece of the keystone of student social life when items and memorabilia will be auctioned and the proceeds put towards the Percy Gee Building Appeal. This is a unique opportunity and it is **not to be missed!**

For more information about events during the Homecoming, please see the enclosed flyer or visit www.le.ac.uk/alumni



ALUMNI ASSOCIATION – COME AND JOIN US!

Do you have happy memories of your time as a student at the University of Leicester? Are you passionate about education and feel you can give something back as one of our Alumni?

We currently have vacancies on the Standing Committee of Convocation, which is responsible for advising the University on all matters relating to Alumni. The Committee works closely with the Development and Alumni Relations team, helping to organise an engaging programme of events,

advising on alumni communications and ensuring that graduates can remain actively involved in ways that benefit both themselves and the University.

We are looking for people with fresh ideas and enthusiasm who can spare around 5/6 days per year to attend meetings and events. If you are interested in a rewarding and interesting role on the Committee please contact Rosemary Faint.

☎ **0116 252 2153** or

✉ alumni.relations@le.ac.uk

A Living Memorial



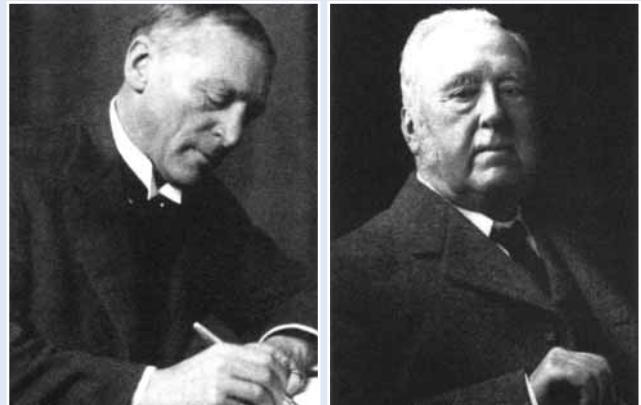
As the University marked the 90th anniversary of Armistice Day and staff and students observed the traditional two minutes' silence, how many realised that they themselves are part of a living memorial, not just on the 11th of November each year, but every day on campus?

On the first Armistice Day in 1918, local Leicester resident, Dr Astley Clarke, along with fellow doctor Frederick Bennett and other friends, opened a fund for the endowment of a University College for Leicestershire, later to become the University of Leicester. The significance of the timing was obvious – the University College was to be seen as a living memorial to those local men who had lost their lives in the First World War – Leicester was to have, as the local paper put it “more than a mere artistic war memorial”. The University motto “Ut Vitam Habeant” – “so that they have life” – stands as a permanent reminder on every publication and degree certificate issued since.

So the University was not born through the will of Government or an education authority, but out of voluntary commitment and burning passion for a peoples' university. Over the next couple of years donations flooded in, from individuals, local societies and companies, even local school children; gifts of hard earned money as well as essential books, artworks and furnishings. By January 1920 over £100,000 had been pledged, an incredible amount; the equivalent sum today would be a staggering £16 million!

Perhaps the most significant gift came from Thomas Fielding Johnson, a local cloth manufacturer who had bought the Leicestershire and Rutland Lunatic Asylum site to gift to Leicester Council for the purposes of setting up a new University College and Grammar School. So the very university campus itself was a gift, the old asylum building since named in honour of Mr Fielding Johnson. Student involvement in fundraising quickly followed, starting in 1923 with the proceeds from a College dance going to support the College Sports Club and Dramatic Society.

The College was established and began to grow through fundraising and loyal beneficence, only receiving its first central government grant of £18,000 in 1945. A small grant in



(L-R) Dr Astley V. Clarke, Thomas Fielding Johnson

relation to £410,000, donated against a background of war and the Great Depression, by loyal supporters over the previous 25 years.

By 1947, as the funding of universities became a higher public priority, the ratio of government money to other income sources shifted significantly, now making up the majority of the University's income. The dependence on state funding was inevitable, but it meant the College was to become vulnerable to the whim of government policy. Inevitably then, as now, the issue of sufficient funding was to become a recurrent theme of many Vice-Chancellors' reports.

The character of today's University can be seen in the College from the very earliest days, when scholarships were established to attract the most able students and, during the Second World War, the College was enlightened to offer a number of free places for refugee students lacking the means to pay fees. Today one of the University's continuing priorities is to widen access to all, regardless of background or ability to pay, making Leicester unique amongst Britain's leading universities 'elite, but not elitist'.



“There is no substitute for a good grounding in life – both through your family and your education. I believe that the new facilities that will be offered through the library development programme will greatly enhance the University’s impact on students’ lives, and be a valuable aid to the University’s long term ambitions, and I am delighted to have been involved from the outset.”

David Wilson

Principal sponsor David Wilson, Mrs Laura Wilson and Professor Robert Burgess surveying the David Wilson Library plans during the early stages of its development.

Our success and ability to grow and develop is thanks to thousands of alumni and friends who continue to make generous gifts to ensure that others may enjoy the same life changing experience of a university education, with close to £275,000 being raised over the past few years alone from the Annual Fund.

Over the past 50 years, one perception is that philanthropy in the UK has played only a relatively small part in the finances of most universities amid the notion that “the state will provide”. However its impact is proportionately great, since charity is not relative, but absolute; regardless of the University’s total income, a gift to provide a bursary can still provide a life-changing education, a donated artwork would still uplift and inspire minds, research can be enabled which otherwise would be left undone, and lives can be changed. It’s why charities such as the British Heart Foundation, the Stroke Association and Cancer Research UK all help fund and partner vital research at the University.

The Government has recently implemented a matched funding scheme, the first of its kind in the UK, “to promote a culture of individual giving to the higher education sector” (perhaps an ironic statement for Leicester, given the very nature of our foundation). For three years, starting in August 2008, the Government has promised to match every three pounds donated to the University with an additional one pound on top of the existing Gift Aid contributions (meaning every £1 could be turned into £1.70), in the hope that a new generation of benefactors will be encouraged to step forward.

It was fitting, therefore, that 90 years after the first endowment fund was set up for our University, the stunning new David Wilson Library opened. Named after the premier benefactor to the project, a local businessman with a desire to see top quality education in his home city. It stands as a shining light to the spirit of charity within the University, its alumni and its community; it is the latest in the long line of gifts, both large and small, which have made the University what it is today, the *University of the Year 2008-09*, committed to inspirational teaching and world class research.

It is clear that the University’s desire to become one of the top ten institutions in the UK will only be possible with the continuing passionate support of our alumni and friends which has produced such an extraordinary living memorial, both in the contribution Leicester graduates have made to society, and also the contribution Leicester research has made to the world. ■

Philanthropy is an essential part of a civil society, even in an economic downturn. It can help turn dreams into reality; it can lift the ordinary to the extraordinary; it can change lives forever. May the University motto, “Ut Vitam Habeant” – “so that they have life” continue to inspire.



The Fielding Johnson building in use as the 5th Northern Field Hospital during World War I



War Memorial in Victoria Park

This comparison shows what original donations in 1918-1920 could buy today:

Original donations from 1918 - 1920	Equivalent donation now (based on average earnings)
£2000 – Mr & Mrs F S Brice, "in memory of their son, Lieutenant Henry C Brice"	£280K – would support the Percy Gee Building Appeal and the transformation of the Students' Union building which will include the creation of a stunning new Atrium and much improved accessibility for all students
£1000 – Mr & Mrs Bernard Ellis "In memory of their son, Oliver, of the RAF, killed in action"	£140K – would help to create an Activities Resource Centre (ARC), supporting and helping students to develop and run activities that add to and enhance student life and the local community, such as RAG and Contact (the volunteering society)
£500 – Mrs Lennard & Daughters "In memory of Second-Lieutenant Edward Lennard, 5th Royal Irish Rifles and Second-Lieutenant Samuel Lennard, 4th Leicester Regiment"	£70K – would fund a PhD over three years, enabling a student to contribute to world-changing research into areas such as cancer, genetics or heart disease
£250 – Dr & Mrs Astley Clarke "A Thank-Offering for Peace"	£35K – would create a new programme to train and develop student leaders, benefiting both the student and local community
£100 – Capt & Mrs T Smithies Taylor "In memory of their son, Lieutenant Garth Taylor, Sherwood Foresters"	£14K – would provide enough bursaries for ten students who might otherwise be deterred from studying due to their financial circumstances
£10 – 10s Granville School pupils "Collection to mark the conclusion of peace"	£1,450 – would provide a grant for a student from a disadvantaged background to buy essential equipment for their studies.



PRIME Placement

Students in the Department of Geology are **ONE** step ahead of the crowd.

As part of the department's Careers and Personal Development Programme, many students look to extend their knowledge and skills by taking part in work placements.

Departmental academic tutors actively promote the benefits of work placements, right from induction week. Students are empowered to take ownership of the task, and this self-motivation pays dividends when applying for placements, proving their commitment to becoming highly employable individuals.

Up to a third of the 3rd years and a half of 4th years will take a work placement each year, usually lasting two to three months and often including paid work and travel to locations including Australia, Canada and Italy, as well as within the UK.

4th year students Matt Timmins and Ryan Bartlett point out that the overseas work provides invaluable experience because the jobs which many students aim for after graduation may require them to move around, and adapt to new environments and cultures.

An Advantage to All

There are many benefits of work placements and all elements of the process, from sending out numerous applications to actually completing a placement, build character and provide students with invaluable preparation for the future.

With the potential for students to take part in a number of placements during their studies, they are able to build upon each one, equipping them with hands-on experience, and giving them a competitive edge in the job market. Third-year Sarah Caven said: "[through placements] you get to meet interesting and helpful people in industry, you get to try out different jobs and find out if you like them and whether you are good at them".

The Industry Aspect

Companies offering placements also benefit. They are able to employ keen, motivated and energetic candidates, willing to get involved in a multitude of different tasks, whilst building up a relationship with a department in a leading UK university that can

potentially act as an effective recruitment channel. Recent placement providers have included multinationals such as Schlumberger, Baker Hughes, BG International and Anglo American as well as public sector organisations such as the British Geological Survey, the RAF and the Environment Agency.

The companies are welcomed into the department to give talks and workshops, and to take part in the department's annual careers event. Some even provide advice on the development of the curricula, helping to shape the degree programmes which ensures that students are taught in a way that is relevant to the current requirements of the industry.

The Graduate Connection

Members of staff in the department maintain strong ties with graduates and welcome any opportunities to develop relationships with companies via alumni.

3rd year Sarah Caven's placement in Canada is a prime example. Graduate Dr Graham Andrews (MGeol 2000, PhD 2006) is now a Postdoctoral Fellow at the University of British Columbia and working with the Geological Survey of Canada. He had discussed the possibility of hosting a placement student with the department's Careers Tutor so, when Sarah expressed an interest in working in Canada, the link was made and she immediately got in touch with him.

With the benefits to students, companies and alumni alike, this programme is guaranteed to continue and flourish and, with ongoing involvement from supportive graduates and companies, Leicester's Geology students will continue to become valued and prosperous members of this truly global industry. ■



Get Involved

Could you or your company offer a placement to students in Geology or any other department?

Please contact
alumni.relations@le.ac.uk or call
0116 252 2153



Willing to Give

No-one can predict the future, but planning ahead can bring you peace of mind, knowing that after you have gone the things you value will be distributed as you wish to family, friends and cherished causes.

"I was fortunate to receive a scholarship to study at Leicester and I have always felt great affection for the place. An education is a gift and I have decided to leave money in my will to help a student enjoy the same opportunity." Dr Roger Anderson, BSc Mathematics 1947.

Gifts in Wills are essential to the University. Without them we simply couldn't continue to invest in teaching that inspires, research that changes the world and much needed new facilities which ensure a 'Leicester experience' for our students that will last a lifetime.

The tradition of giving is as old as the University itself. We are enormously grateful for every gift we receive – no matter how

large or small. Each person who remembers our work in their Will becomes part of our rich history and most importantly, our future. Leaving a gift to the University of Leicester in your will is a great way to invest in the future without affecting your finances today – and could potentially reduce the tax you pay.

We also want to make leaving such a special gift as straightforward as possible. You can obtain a free copy of our Gifts in Wills guide (no obligation) by contacting Kathy Whitehurst, our Legacies and Bequests Officer, who would be happy to discuss your plans in confidence.

If you have already added the University to your Will, we would love to know of your intentions. ■

You can contact Kathy at:

The Development and Alumni Relations Office,
University of Leicester, University Road, Leicester LE1 7RH

Alternatively you can browse the Gifts in Wills section of our Website at www.le.ac.uk/alumni



Kathy Whitehurst

Major Gifts, Legacies and Bequests Officer

☎ +44 (0) 116 252 2195 or

✉ kw42@le.ac.uk



Percy Gee Development Plan

In spring 2009, an 18-month major refurbishment and extension project will begin to transform the Percy Gee Building into a Students' Union fit for the 21st Century.

Did you know that the building was named after local benefactor and tireless university campaigner Percy Gee? It was completed in 1957 but was not designed with the current growth in student numbers in mind.

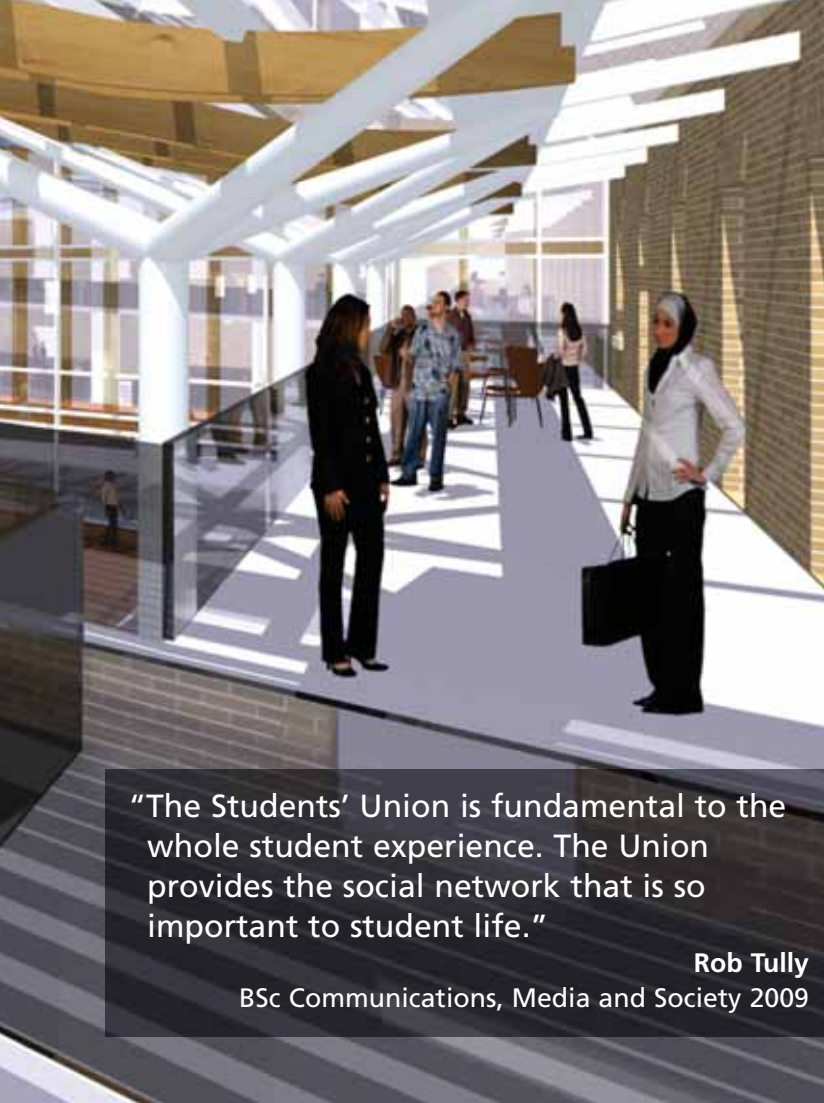
The building has over 35 different levels and can be difficult to navigate and frustratingly inaccessible by students with disabilities. Originally serving a population of just 800 students, primarily from the UK, the same facility now caters to the needs of over 21,000 students, drawn from all around the world. In parts the building is worn, tired and definitely past its serviceable best. The solution to these challenges is both innovative and stunning.

A spectacular central atrium and courtyard area will join the north and south wings together, whilst an extension towards University Road will present a major new contemporary façade.

The atrium will introduce a flood of natural light into the building and, combined with new ramps, lifts and levelled floors, help to vastly improve accessibility. However the Students' Union is much more than just a building.

Vital welfare, housing and financial advice is provided to thousands of students each year, and the Union is a home from home for 1,700 International students. It is also the base for action in the community.

Through the student volunteer association, Contact, over 600 students at any one time are actively engaged a wide range of projects – from assisting primary school children with their reading, to befriending and providing active support for people in the early stages of dementia. This social and community aspect of student life is so important that even the legendary Union bar will be on the move.



"The Students' Union is fundamental to the whole student experience. The Union provides the social network that is so important to student life."

Rob Tully
BSc Communications, Media and Society 2009

Artist's impression of the redeveloped interior of the Percy Gee Building

The very final Redfearn "last orders at the bar" will be called on June 27th this year, coinciding with the Homecoming event – don't miss your final chance to say goodbye to the Redfearn.

The Redfearn will make way for a dedicated 'Community Centre' space to house and support the student societies, sports groups and the seven Affiliated Associations – including RAG (Raising And Giving), the International Students Association and Contact. But all is not lost for those students who enjoy socialising over a drink.

As a charity, all hard-earned profits from commercial activities are ploughed straight back into the Union and so the plans also include exciting improvements and expansion of the shop, cafés, catering, bars and nightclub.

The green credentials of the building will also be improved through the use of natural light and ventilation, wind catchers on the roof and terrace, use of natural materials, solar panels and shading on the roof, and a carbon neutral biomass boiler.

The redevelopment is scheduled to be finished in time for the Freshers' Fair in 2010. As Trevor Page, Chief Executive of the Students' Union, sums up: "this stunning building will bring facilities into the 21st Century and establish Leicester as the Union of choice for aspiring students." ■



Artist's impression of the new bar



Last chance saloon in the Redfearn Bar



Post your Percy Gee memories and see them exhibited at the Homecoming 27th June 2009. Visit percygee.org

Annual Fund



The plans feature a central Atrium, joining the north and south wings, which will introduce natural light into the building, as well as improve circulation throughout. New ramps, levelled floors and new lifts will substantially improve accessibility for every student, and wheel-chair users in particular.

The redevelopment is reminiscent of the expansion that transformed the campus 50 years ago when we achieved great changes with the support of our founding patrons and an ambitious and successful fundraising campaign.

The Percy Gee Building Appeal

Thanks to Leicester's growing reputation for inspirational teaching and world-changing research, the demand to study here and for first class facilities has never been higher.

The University is now embarking on a £1 billion building programme, the biggest ever undertaken in the university sector, to develop a first-class

estate befitting a first-class university. A new Students' Union building is at the forefront of these plans.

When the Percy Gee Building opened in 1957, it served a population of 800 students. To meet the growth in student numbers from 20,000 currently to 25,000, a major refurbishment and extension project beginning this summer will transform the Percy Gee Building.

How can you help?

Today we urgently need to raise £3m with the help of alumni, friends and other funders to realise this flagship project and ensure that the next generation of students has the very best campus facilities and a 'Leicester experience' that will change their lives forever.

For more information please call Kathy Whitehurst on 0116 252 2195 or email kw42@le.ac.uk

Student Opportunities Fund

The average student leaves university burdened with a debt of £17,500. For some students that makes finishing their studies impossible, and it discourages others from even applying in the first place.

We are committed to awarding scholarships and bursaries to students, especially those where there is no tradition of going to university. The University believes strongly that students should be admitted on the basis of their abilities, not their financial circumstances.

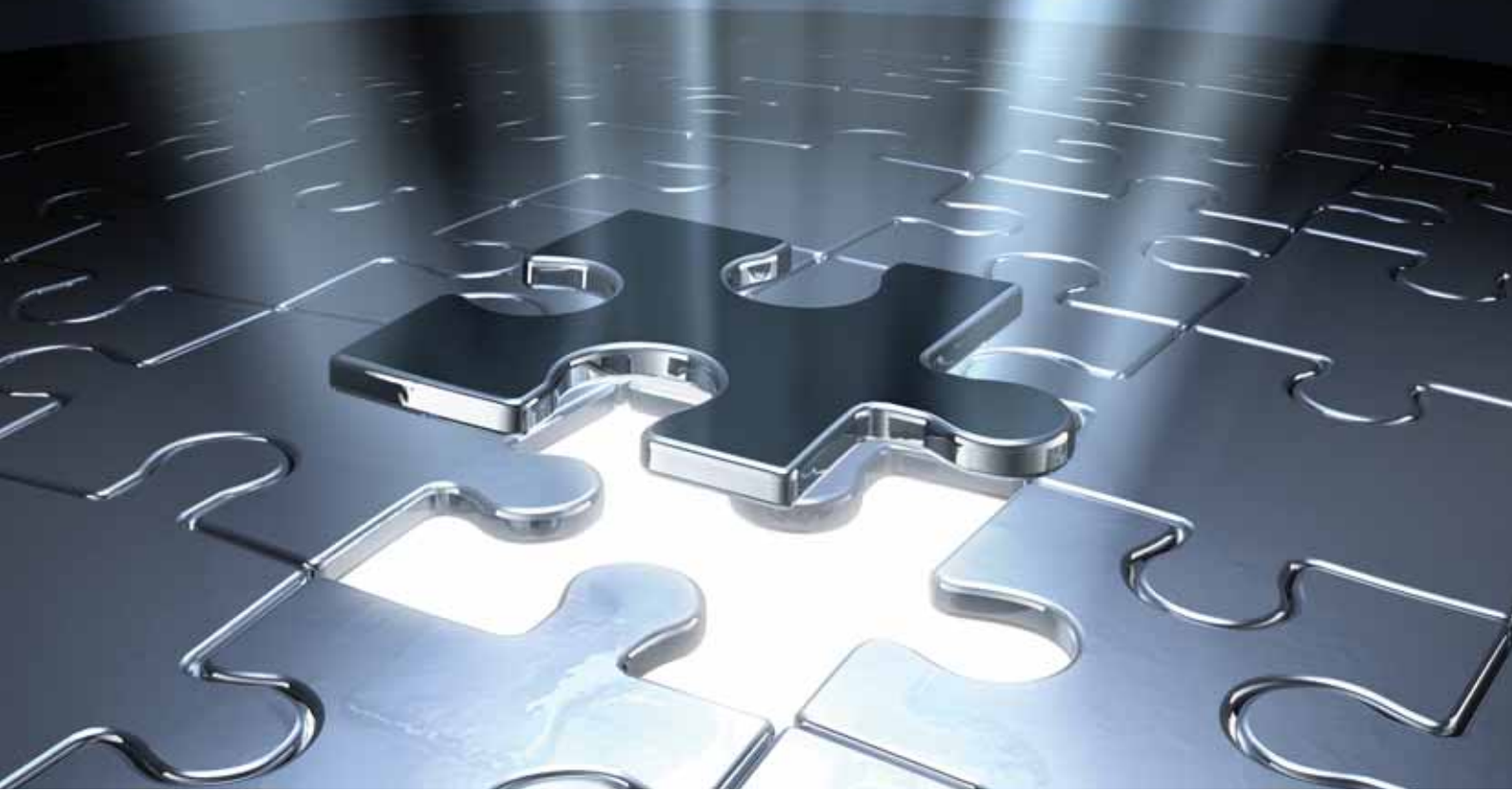
With your support, the Student Opportunities Fund can continue to offer more scholarships and bursaries to deserving students. In these challenging times, we aspire to provide the next generation of students with the same educational experiences you enjoyed at the University of Leicester.



"As a student on a very intensive course, I was extremely grateful to receive a bursary. It is a fantastic scheme, and has helped me and other students greatly."

Claire Bicknall, LLB Law 2010
University of Leicester Bursary Beneficiary

To pledge your much needed support for either of these projects, please complete the enclosed donation form or visit the website at www.le.ac.uk/alumni or call us on 0116 252 2153.



THE PERFECT MATCH

Between August 2008 and July 2011 the Government's new Matched Funding Scheme will mean that your generous donations to the University will make even more of a difference.

The scheme adds an extra £1 to every £3 you give, including Gift Aid – so a gift of £100 could potentially be worth £170!

There has never been a better time to support your University and the next generation of Leicester alumni.

Please complete the enclosed donation form today!

ROLL OF BENEFACTORS

Thank you for your generous support

Thank you to all those benefactors listed below, and to our 61 anonymous givers, who made a contribution to our Annual Fund between 21st February 2008 – 31st December 2008.

- 1943**
Mr Ronald S Kinns
- 1944**
Miss Joan Beck
- 1948**
Mrs Jean M Watson née Wilson
- 1950**
Mrs Sheila M Elsdon née Armstrong
Mrs Angela Salzman née Boughen
- 1951**
Mrs Dorothy E Frost née Walker
Mr Andrew G Peto
Mr Alfred A Warren
- 1952**
Mrs Joan M Gell née Stinton
- 1953**
Rev Derek Crabtree
Mr Sidney Gell
Mr John F Pawling
Mrs Joan E Pierce née Lawrence
Mr Edward Salthouse
- 1954**
Mr Ian R Nightingale
- 1955**
Mr Ronald A & Mrs Margaret A Brown née Nevison (1957)
Mr Ronald E Gadsby
Mrs Anne C Porges née Carter
Mr John A Sanderson
Mr John S Wright
- 1957**
Miss Helen L Bartlett
Mrs Janet E Jackson née Cooper
- 1958**
Mr Bernard W Simpson
- 1959**
Mr Paul T Anderson
Dr Janet C Cutler
Mrs Jean G Shaw
Mr Robin Tittley
Mr Michael & Mrs Josephine Westwood (1960)
Ms Christine Woodward
- 1960**
Dr David H Durant
David C Jennings
Mrs Margara E Lester née Marshall
Mr Donald M Martin
Mr John S Ramsbottom
Mrs Angela E Woodward née Lattimer
- 1961**
Mr Philip J & Mrs May M Reeve née Musgrove (1960)
Dr David C Rex
Mr William A Thompson
- Dr Graham R Wilson
- 1962**
Mrs Sheila L Allcock née Wood
Mrs Barbara A Diprose née Elliott
Mr Connor P Melia
Miss Margaret J Roberts
Mr Alan G Ross
Mrs Janet Sales
Dr Geoffrey Walker
Dr H Doug Watts
Mr Michael G Webb
- 1963**
Mr John & Mrs Josephine A Fitch née Bagley
Professor Barry S & Mrs Diana M Gower
Mr Peter G Harris
Miss Jean E Maudsley
Mr Alfred M & Mrs Christine M Morton-Thorpe (1964)
Mr Brian G & Mrs Valerie M Pocock née Thompson
Mr Michael A Underhill
Professor John J White
- 1964**
Miss Brenda P Colman
Mr Raymond J Davies
Rev'd Michael J Fisher
Dr David R Yates
- 1965**
Mr Alan R Tong
Mrs Barbara M Wilson
- 1966**
Mrs Linda J Holmes née Marriot
Mr John S Metcalfe
Mr Keith L Osborne
Professor Raymond W Snidle
Mr Rodney J Sortwell
- 1967**
Mr Michael Lewis
Mrs Elizabeth M Lomas née Williamson
Mrs Marion J Stephenson née Maynard
- 1968**
Dr Anthony W Andrews
Mr Anthony P Baker
Miss Gillian P Cope
Mr Keith R Gent
Professor Wynford P Grant
Mr Kenneth & Mrs Stephanie Hall née Wigglesworth (1969)
Dr Ian J & Mrs Sheila M Harvie
Mr John P Marlow
Mr Raymond J & Mrs Linda Perham née Conroy (1969)
Mr John I Roberts
Mrs Pauline A Smith
Miss Jill C Woodward
- 1969**
Mr David Blackmore
Mrs Maureen Clarke née Murray

University Keepsakes



To view or purchase please visit our website www.gownhire.co.uk and select 'My Accessories'

Our wonderful new range of university memorabilia for graduates. Along with the traditional selection of Dartington crystal glassware for special occasions.



- Mr Michael J Clarke
Mr Richard Van Mechelen
Mr Nicholas Regan
Mr Dorian and Mrs Anne Wood née West (1972)
- 1970**
Mr Derek Jowett
Mr Richard M Whitehead
- 1971**
Mr George J Blair
Dr Roger J Hubbard
Mrs Alison M Ward née Mason
Dr Margaret E Williams née Lamb
Mr Michael and Mrs Sylvia White
- 1972**
Mrs Patricia O Chapman
Mr Michael L Hawken
Mr Edward & Mrs Jean Jackson née Yates
Mrs Christine A Nash née Oliver
Dr Hilda D Spear
- 1973**
Mr Trevor Breedon
Ms Jennifer A Callow
Mr Philip Cutcher
Dr Martin J Davies
Mrs Jane M Moran
Mr John Roseaman
Mrs Anne D Sugden

- 1974**
Mr Michael Collen
Miss Linda J McDermid
Mr Neil D Morris
Mr Gerald Newbery
Mr Richard K O'Shea
Mr John R Penniford
Mrs Valerie A Reilly née England
Mr Anthony P Scott
Dr William Scutcher
Mr Christopher E Squire
Mr Stuart & Mrs Irene Wigham (1975)

- 1975**
Mrs Susan Moore née Jefferies
Mr Paul Rivlin

- 1976**
Dr Brian D Judkins
Mr Duncan J & Mrs Susan Mountford
Mrs Ruth A Smith née Coles
Mr Stuart M Smith
Mr Jerry Tweddle
Mrs Gillian West

- 1977**
Mrs Jane A Bull
Mrs Joy C Stone née Malkin
Mr Gordon B & Mrs Rosalind Watson née Ellis

- 1978**
Miss Hilary M Meakin
Ms Victoria M Treherne

- 1979**
Mrs Alyson J Hogarth
Mr Russell Munslow

- 1980**
Mr Martin J Doughty
Mr Donald K & Mrs Samantha J Fraser
Major Charles J Jenkins
Mr Eric Morrell
Mr Ian Phillipson
Mrs Katherine F Satchwill née Fowler & Mr P C Satchwill

- 1981**
Ms Deborah J Adcock née Cliffe
Mr Philip C Chapman
Mr Oliver Hou Hon Chu
Dr Eileen M Cox
Dr Perrie S Crook
Mr Charles S Geffen
Mr David A Hancock
Mrs Dorothy C Morris née Shellard
Mr Ian Mumford
Mrs Jennifer C Tittley
Mr Paul O Wheatley

- 1982**
Miss Fiona M Chapman
Mr Grahame Collinge



favourites such as ties and scarves, we also have on offer a

Mrs Susan Jones née
Luetchford
Mr Bryan J Meloy
Mr Roger W Parsons
Mrs M Christine Richardson
Mr Andrew M Smith

1983

Mr Tim J Barlow
Professor Martin A Barstow
Mr Michael J Bedford
Ms Yvonne M Cresswell née
Hayhurst
Mrs Fiona D Leyshon née
Duncan
Mr Richard M Lynn
Ms Janet E McFadyen née
Sawyer
Mr John N Pullin
Mr Michael D Robinson
Mr Thomas Smith
Mr Mark B Trafford
Dr Michael P Wylde

1984

Dr Helen M Chadwick
Ms Susan M Christelow née
Halliday
Mr David G Cramp
Mr Lloyd A Fletcher
Dr Shaun A & Dr Louise K
Fountain (2002)
Mrs Nicola A Green née
Tegetmeier
Mrs Madeleine J Parry née
Rohrer

Ms Eleanor J Roaf
Mr Nigel Stennett-Cox
Mr Neil H Tidman
Mrs Susan M Timme née Leary
Dr Ngozi O Uduku
Mrs Sally A Valletta née Brook
Mr Nicholas M Wright

1985

Miss Maureen Bateman
Mrs Janice Dillon née Wall
Mrs Denise Noble née
Thompson
Mrs Helen E Ralston née
Warren

1986

Mr David Beavis
Mr Robin M Eyre
Mr Julian G Fowles
Miss Jo D Hall
Mr Robin & Mrs Caroline S
Meakin née Harvey (1988)
Mr Rajesh R Patel
Dr Martin A Smith
Mrs Caroline L Taylor-Sneddon
née Taylor

1987

Mr Simon D Batchelor
Dr Vicente C Castells
Dr Nuton A Faisal
Mrs Penelope M Gaines née
Davidson
Mr Philip M Hill
Mrs Lisa C Hotten née Ayliffe

“It seems to me that our society depends on vibrant, well-funded universities – they train the doctors, teachers, scientists and engineers of tomorrow and their research helps make up a healthier, more prosperous and (hopefully) more tolerant society. That’s why I’m happy to do my bit by making regular monthly contributions.”

Ian A Jones
BA Politics, 1993

Mrs Catherine Leivers née Bell
Mr David R Stevenson

1988

Mrs Sarah L Anderson née
Harburn
Mr Paul Cartledge
Mr David B Cook
Mr Andrew P Cox
Dr Elizabeth A Groves née
Bishop
Dr Jeremy D Harrison
Mr Gavin M Jones
Mr J Richard Moulton
Mrs Linda M Owen
Mr Phillip J Sheldon
Mr Roger G Williams

1989

Mr Stephen D Brearley
Miss Julia Koops
Mr Howard D Miller
Mr Christopher W Reade
Dr John D Taylor

1990

Mr David T Arden
Dr Keith Bailey
Ms Nicki Hastie
Mr David R Murby

1990

Mr Dennis Roughton
Mrs Anne G Shipman
Mrs Charlotte J Stubbs née
Smith

1991

Dr Christopher D Brown
Mr David A Brown
Mr Mark E & Mrs Tracy A
Bushby née Williams (1993)
Mr Garfield M Rawnsley
Mr Steven J Richardson
Miss Julie R Slawson

1992

Rev Douglas A Brewer
Mr Allan J Kelly
Mr Michael K Peck
Mr Sidney E A Riley
Miss Gillian L Russell
Dr Michael J Thornton
Mr Simon S Ward & Mrs
Joanne F Oliver

1993

Ms Catherine Cho
Mrs Sarah L Cort née Draper
Dr Philip S & Dr Alison C H
Heppell Worsley (1994)

Mr Ian A Jones
Dr Steven R Joyner
Mrs Judith Palmer née Moore

1994

Dr Phillip J Devine
Mr Anthony Jones
Mr Edward N Macfarlane
Smith
Mr Henry S Moe
Mr Martin P Radford
Mr Craig Sisson
Mr John Smith
Mr Sweet T Tan
Dr Andrew J Wade
Mrs Margaret M Wilson née
Barnard

1995

Mr Howard Billam
Dr Khaing C Chen
Mr William L Latimer-Sayer
Miss Eleanor F Murkett
Miss Solveig J Rusby
Dr Anna L Wallis

1996

Mr James S Cresswell
Mrs Carolyn M Jones
Mr William T Lawrence
Mr David C Stibbons
Dr Christopher J Sutton
Mr Michael D Thurgur
Mrs Elizabeth M Webb

1997

Mrs Rachel H Basi née
Hayward
Ms Rosalind S Griffin
Mr Nigel T Paine
Dr Sylvia M Pinches
Mr Gregory M Williams

1998

Mr Robert J Farnsworth
Dr Patricia A Horton
Dr Stephen J Jennings
Ms Victoria M Sibley née
Townes
Miss Alison L Smith
Mrs Judith C Turner
Mr Stuart G Wood

1999

Miss Jessica M Goford
Mr Stuart R Marriott
Dr Saqib Pervaiz
Mr Andrew J Pullen
Mrs Clare J Southwell née
Verney

Mrs Enid V Walters
Mr Brian A Wilshaw

2000

Mrs Elizabeth Allan
Miss Rosa-Maria S Fernandes
Miss Deborah A Fox
Mr Hugh R Hughes
Mr David G Jones
Mr Anthony Kearsley
Mr Michael Lahiffe
Miss Anna E Powell
Mr Oliver Webb
Miss Maggie Weller

2001

Miss Lucie P Clayson
Mr Simon G Cutting
Mrs Johanna E Dibbs née
Rickard
Miss Kathryn Hayes
Ms Elaine V Pole
Mr Nicholas P Syndercombe
Mr Philip J & Mrs Tanya E Willis

2002

Mr Kurt L Barragan
Mr Richard Johnson
Mr Brian P Lewis
Mr Daniel F Pope

2003

Mr Kazuhiro Shimotori
Miss Omakolo C Ugowe née
Obu

2004

Mr David W Bareham
Mr John Harte
Mr Jonathan Lewis
Mrs Judith A Nayler

2005

Mr Michael C Kay

Graduates

Mr Michael J Hughes
Mr Graham Jones
Mrs Moyra J Mathews

Parents

Mrs Gillian M Aden
Ms Kathryn M Boast
Mrs Marie Fitzpatrick
Mr N H Saleh
Mrs Gillian E Smith

Former Staff

Mr Richard H Float



Did you Know?

10 Facts About Your University

1	The University was named 'University of the Year 2008-09' by the <i>Times Higher Education</i> , with judges remarking that Leicester was 'elite without being elitist'
2	Leicester increases its position in all four national university league tables: <i>Independent</i> (12th), <i>Times</i> (14th), <i>Guardian</i> (14th) and <i>Sunday Times</i> (18th)
3	HM The Queen opened the University's new £32m David Wilson Library in December 2008
4	Leicester has launched a £1 billion development framework plan – designed to continue the transformation of our estate – and one of the largest schemes in the sector
5	University of Leicester has launched UK's first course on human space flight, to be taught by NASA astronaut and Honorary Leicester Graduate Dr Jeff Hoffman
6	The 50th Anniversary celebrations at the University drew thousands to the campus for a range of exciting and stimulating events
7	Leicester has been selected by government as one of nine leading selective universities to lead work identifying talent and ability amongst students from disadvantaged backgrounds
8	The 2008 Research Assessment Exercise identified Museum Studies at Leicester as having the greatest cluster of world-leading researchers compared with any discipline in any university in the UK
9	Leicester features in the world's top 200 universities (151st in the Shanghai Jiao Tong Table and 177th in The Times Higher World University rankings 2008)
10	In 2008 92% of full-time students taught at Leicester were satisfied with their programme, a level of satisfaction exceeded only by Cambridge amongst mainstream universities teaching full-time students in England